



---

# Adaptiva OneSite Cumulative Release Notes

Updated: May 13, 2025

## Build 9.2.967.20

Release Date: May 13, 2025

Early Adopter Release Date:

### Download

#### [Build 9.2.967.20](#)

*Note: Please email [ticket@adaptiva.com](mailto:ticket@adaptiva.com), or open a ticket from the support portal, to receive the password to extract the ZIP file.*

## Highlights!

- ▀ Bug fixes and quality updates that impacted upgrade and performance

### Common

#### Changed

- ▀ Updated Java 17 JRE to 17.0.15
- ▀ Updated poi library to 5.4.0

#### Fixed

- ▀ Resolved an issue that could cause upgrade failures due to a timing conflict between SQL Manager start up and Object Manager upgrade

### Server

#### Changed

- ▀ Push API foundry binaries to all Windows clients irrespective of license
- ▀ Patch Notification Bots are no longer allowed to mix WhatsApp Communication Provider with other Communication Providers. Existing Patch Notification Bots must be modified if using WhatsApp communication provider. ACTION: Review custom Patch Notification Bots
- ▀ Changed WhatsApp notifications to use templates approved by Meta
- ▀ Changed the method of downloading SQL Express during installation to not be blocked by IE Enhanced Security Configuration (ESC)

#### Fixed

- ▀ Fixed issue where a newly created business workflow would not open.
- ▀ Fixed issue where excessive client addition group evaluation would degrade server performance
- ▀ Fixed issue when the consolidation of content receipts from CONTENT# tables into dbo.client\_content\_receipt failed silently if rows did not conform to a key
- ▀ Fixed issue causing server upgrade to fail when migrating Business Units

- ▲ Fixed issue where RHEL clients would not appear as members of RHEL 8 and RHEL 9 business units
- ▲ Fixed issue where Tenable Security Center URIs saved with improperly formatted URI no longer prevent the server from starting up
- ▲ Fixed issue where clients would not be added to Windows Business Unit after reporting windows build number to server

## Client

### Fixed

- ▲ Fixed issue with version comparison of packages on pkg-based and rpm-based Linux distributions
- ▲ Fixed issue where MSI-based patch installations required /qn switch
- ▲ Fixed issue with file-related sensors not returning results on 32-bit clients
- ▲ Fixed issue where UNIX clients could not execute UnixFileDetails sensor

## UI

### Changed

- ▲ Updated Patch Notification Bot editor to account for WhatsApp changes
  - UI now disallows combining WhatsApp Communication Provider with other Communication Providers
  - UI does not display the Output Expression if WhatsApp is selected

### Fixed

- ▲ Fixed issue where the User Dashboard widget *Rank* did not display results as expected

## Build 9.2.967.18

Release Date: April 9, 2025

Early Adopter Release Date:

## Download

### [Build 9.2.967.18](#)

*Note: Please email [ticket@adaptiva.com](mailto:ticket@adaptiva.com), or open a ticket from the support portal, to receive the password to extract the ZIP file.*

## Highlights!

- ▲ Bug fixes and quality updates that impacted upgrade and performance

## Common

### Fixed

- Fixed issue where not all eligible entries would flush from dynamic maps on memory level changes

## Server

### Fixed

- Fixed issue with the materialization process for the client\_device view
- Fixed issue where client setup SMS file was using older version information
- Fixed performance issue with content deletion receipts upload procedure
- Fixed issue with customized product sensor action expressions failing to validate and save
- Fixed issue with export/import of non-built-in business units
- Fixed issue where patch ids and client ids inputs were not correctly processed in the PatchStatusQuery workflow activity
- Updated and Deployed built-in sensors with supported platform information, also updated non-built-in sensors and actions
- Fixed lockup condition in workflow deployer on server with object manager

## Client

### Fixed

- Deprecated SHA256Hash output column from FileDetails Sensor for performance reasons

# Build 9.2.967.17

Release Date: April 2, 2025

Early Adopter Release Date: March 17, 2025

## Download

### [Build 9.2.967.17](#)

*Note: Please email [ticket@adaptiva.com](mailto:ticket@adaptiva.com), or open a ticket from the support portal, to receive the password to extract the ZIP file.*

## Highlights!

- See Highlights and FAQs under 9.2.967.12

## Server

### Added

- ▀ Removed orphaned rows from the inventory tables on upgrade and added handling to avoid such rows
- ▀ Added support for validating Tenable access settings and configuring fetch period

### Fixed

- ▀ Fixed issue where child business units would not inherit custom approval chain, rollout processes, lab business units, and process launch form settings from the All Clients Business Unit
- ▀ Client Table performance improvements when handling large ID lists
- ▀ Fixed issue where trigger property routing would fail with index out of bounds error if we were unable to determine product of the routed patch

## Client

### Added

- ▀ Added support for associating Falcon sensor with Adaptiva client on Linux and on macOS

### Changed

- ▀ Increased direct buffer space allocation, default was limited by the configured heap size
- ▀ Decreased interval to 4 hours from 24 hours for checking server activation status

### Fixed

- ▀ Fix for a rare condition which could cause a crash while parsing logs for CAB scan failure
- ▀ ClientFeedInstalled index `idx_ClientFeedsInstalled__product_id__client_id__installation_time` was initially unique. The index has been demoted to be non-unique
- ▀ Fixed issue where cycle compliance calculation would not consider all relevant patch statuses
- ▀ Fixed version comparison between Debian Linux package versions
- ▀ Fixed issue where scanning would not detect installed packages when running Linux with a non-English locale
- ▀ Fixed issue where reboot reminder countdown notifications would appear multiple times after machine wakes up from sleep
- ▀ The patch scan did not properly enforce case sensitivity on macOS and Linux
- ▀ Fixed issue where client was using server name binding even when binding type was IP and server name binding had a value specified.

### Removed

- ▀ Removed dependency on `gsettings` for retrieving system proxy information on Linux

## UI

### Add

- Added a toggle switch to OneSite Health Policy editor UI to reflect the Policy enablement state

### Changed

- Disabled the rename menu option for all built-in folders
- OneSite Health Policies are now disabled by default when created through *Save as*
- Updated OneSite Anywhere Settings editors to size headers consistently

### Fixed

- Fixed an issue where the UI allowed users to sort Approval Requests on columns that resulted in server errors
- Fixed an issue where users could create new Blocked Patches under the Adaptiva Blocked Patches folder
- Fixed an issue where the blocked patches editor would not open
- Fixed an issue preventing users from selecting Management Point Groups for DP Bypass Settings
- Fixed an issue where checkbox groups would cause errors when *Select all* was checked.
- Fixed an issue where choosing *Save and Deploy* in the Maintenance Window editor did not always reflect the right deployment state
- Fixed a typo on some device table menus
- Fixed an issue where WebForm designer menu items Import JSON, Clear Form, and Configure Submit Button did not work
- Fixed an issue where Workflow node customizers that select objects by name selected by Object ID
- Fixed *Update Activity* workflow node menu item update behavior
- When updating dynamic node properties, user set values will persist when possible
- Fixed an issue where renaming a Workflow from the table menu did not sync the WorkflowName property in the Workflow's Start node
- Fixed an issue where the Workflow Designer sometimes hit errors when copy/pasting nodes with multiple levels of nested children
- Fixed "Update Activity" workflow node menu item update behavior
  - When updating dynamic node properties user set values will persist when possible
- Fixed an issue where renaming a Workflow from the table menu did not sync the WorkflowName property in the Workflow's Start node

## Build 9.2.967.12

Release Date: TBD

Early Adopter Release Date: March 17, 2025

## Download

### [Build 9.2.967.12](#)

*Note: Please email [ticket@adaptiva.com](mailto:ticket@adaptiva.com), or open a ticket from the support portal, to receive the password to extract the ZIP file.*

## Highlights!

- ▲ OneSite Patch supports additional operating systems
  - Linux (Ubuntu, Debian, CentOS – RHEL and Amazon Linux coming soon)
  - MacOS
- ▲ Performance improvements for OneSite Health

NOTE: The cross-platform binaries are not included in the .zip file at this time. Please request them by opening a ticket with Adaptiva Support.

### *Cross Platform Capabilities:*

#### Autonomous Patch Management:

- ▲ Windows: OS, third-party patching, drivers, and BIOS
- ▲ Linux: Repository-based library and application patching
- ▲ Mac: Third-party patching (no OS patching)

#### Platform-Agnostic Dashboards:

- ▲ Centralized visibility across devices (Windows, macOS, Linux) in one pane of glass.
- ▲ Filterable views by business units
- ▲ Built-in business units for Windows, macOS, Linux distributions.

#### Risk-Based Prioritization:

- ▲ Fully integrates risk prioritization using CVSS criticality or VM integrations (CrowdStrike, Defender for Endpoint).
- ▲ Works across all platforms mapping vulnerabilities and available patches.

#### Peer-to-Peer Content Distribution:

- ▲ Platform-agnostic peer-to-peer capabilities: i.e. Devices can download and share metadata and data peer-to-peer irrespective of their OS type. (Some Linux exceptions, see notes below)

#### Workflow Automation & Flexibility:

- ▲ Workflow can be authored for all or specific OS types.
- ▲ Supports mixed-device patching strategies, with consistent workflows and reporting across multiple OS types.

## Linux FAQs

### 1. Does OneSite support third-party patching for Linux?

- Currently, OneSite focuses on patching applications and libraries included in the official repositories of supported Linux distributions. These distributions include Ubuntu, Debian, CentOS Stream (RHEL and Amazon Linux Coming soon).
- Third-party patching, such as managing packages from external repositories like Google Chrome is not supported in this release.

### 2. Why isn't third-party patching for Linux supported?

- In the Linux ecosystem, most distributions centralize software management through their official repositories. These repositories are curated to maintain compatibility, stability, and security.
- Third-party repositories are often managed independently, requiring manual configuration and maintenance, which adds complexity. For this reason, our initial focus is on ensuring seamless patching from the trusted and official sources provided by each distribution.

### 3. What is included in the patching scope for Linux?

OneSite supports:

- Updates for applications and libraries found in the official distribution repositories.
- Examples include applications like Chromium, Firefox, Apache HTTP Server, NGINX, and core system components such as the Linux kernel, OpenSSL, and OpenSSH.
- OS updates (e.g., kernel or library updates) within the same distribution release are fully supported.

## Mac FAQs

### 1. What macOS versions does OneSite support?

- OneSite does not support macOS OS patching at this time. However, third-party macOS application patching is available.

### 2. What third-party applications can OneSite patch for macOS?

- OneSite supports over 750 macOS third-party applications (like Windows) with installation customization options. See the list here: [OneSite Patch 3rd Party App Catalog](#)

### 3. Does OneSite Patch support iOS or iPadOS patching?

- OneSite Patch does not support iOS or iPadOS patching.

## General

Changed

- Renamed AdaptivaVMwareACCIInstaller.exe to AdaptivaWorkspaceONEACCIInstaller.exe
- Upgraded to JRE 17 from JRE 8
- Improved setup and startup efficiency for Server and Client.
- Upgraded several bundled 3<sup>rd</sup>-party libraries



## Fixed

- Fixed a bug where, when a workflow activity in a procedure would yield the thread, properties in the procedure were cleared.

## Server

### Added

- Updated Tenable asset matching to use machine FQDN and Netbios name as a fallback to establish agent association
- Installer validates if client HTTP transport port is not in use
- New Business Units Added
  - Business units for: Windows, macOS and Linux
  - Business units for: Debian 11, Debian 12, Ubuntu 22.04 LTS, Ubuntu 24.04 LTS, CentOS Stream 9, CentOS Stream10
- PatchStatusQuery workflow activity is now supported
- Reboot system improvements
  - Ability to specify separate maintenance / deployment window for deployments vs reboots
  - Ability to suppress reboots using User Interaction Settings
  - Ability to specify up to 5 custom snooze durations in User Interaction Settings
- Added new Strategy Operations dashboard, providing a view of current and historical execution of a given enabled Patching Strategies
- Strategies now support specifying platform filter when *Include All Products* is selected
- Tenable agent sensor now supports macOS and Linux

### Changed

- Adjusted Defender VM integration to log a warning when access settings have not been provided instead of attempting to pull and failing with an exception
- Changed all process workflows in patching product to Business workflow type in order to enable launch form usage in patching workflows.
- Windows client now reports full OS version information in Assets, Devices view
- In Pause Flex Control of Patching, users are no longer allowed to pause approvals of waiting cycles
- HTTP/2 support has been added to Adaptiva Server
- OneSite Health: Several performance and usability improvements in dashboards
- When performing a reset data patch scan on clients, historical data is retained for the client.
- Feed consumption and VulnerabilityManagement logging improvements.
- Content receipts are stored in single table client\_content\_receipt/v\_client\_content\_receipt for all published content
- Default web UI port now depends on selection of HTTPS mode

## Fixed

- Case sensitivity potentially causing workbench authentication failures after upgrade

- Fixed issue where clicking on devices count in Overall Metrics of cycle UI would show an empty table
- Minor log improvements, including fixing typos, clarifying wording, and removing duplicate error logging
- Fixed issue where running cycles would fail to detect workflow instance on server restart
- Fixed issue where uninstalling patch license would fail when attempting to process removed approvals
- Fixed issue where patching SQL rollups would block patch status SQL insertions

#### Removed

- Installer central office IP range configuration.
- Default self-signed certificate SAN names other than FQDN and computer name.
- Removed NGINX from Adaptiva Server. Files are now served directly by the server process.

## Client

#### Added

- Add component log `PatchingAdmin.log` to log client-side administrative actions
- Prefer Windows clients get selected for content uploads and downloads
- Control setting to let Microsoft manage windows updates even when licensed for OneSite Patch.  
`patching_client.use_wu_defaults`
- Added auto-recovery for the Windows Update service if scan fails. This can be disabled by client settings configuration  
`patching_client.wu_auto_recover`

#### Changed

- x64 and x32 folders are no longer included in installed client. amd64 and x86 should be used instead

#### Fixed

- Fixed bug where the `EditFile` action would overwrite the file rather than append to it
- Fixed bug where the `FileRegex` sensor failed when the regex matched the empty string
- Added paths to commands being executed in `Runtime` and `ProcessBuilder` objects to prevent unexpected commands from being run
- Fixed a bug where some macOS applications would not be detected due to diacritical markings on characters
- Fixed a bug where Linux deployments would fail when attempting to install a package older than the currently installed version. The deployment will now be cancelled.
- Fixed a bug where a command line action with no parameters would not be evaluated
- Potentially scheduling client service before install was completed.

## UI

### Added

- Added a toggle switch to control the enablement state of Administrators
- If an admin gets locked out, toggle this switch back on and save to reenable the Administrator
- Added support for syncing ConfigMgr collection membership to Admin Portal UI
- Added support for additional application fields and requirement rules in Intune P2P apps
- Added tooltip text support to application context menu items
- Added description paragraphs for patching object browsers
- Added icons to Workflow tables to signify Workflow type at a glance
- Added signposts to the object browser widget to display the description of the selected folder if available
- Added a suppressible overlay warning when the app detects a user has disabled clipboard access in their browser
- Added product icon display support for Customized Products in OneSite Patch
- Added a new *Show Changes* menu item to editor views to display pending changes to the current object in a *diff* view.
- Added scrolling support for context menus that are taller than the available space in the window
- Added support for device selection in User Dashboard parameters
- Added a persistent display for Workflow Deployment Status in the Workflow Designer
- Added Paste Before and Paste After menu items to the Workflow Designer

### Changed

- Updated label text from *Maintenance Window* to *Deployment Window* in Business Unit editor UI
- Updated *Client Auto Upgrade* dashboard to use more clear wording and specify Windows-only support
- Updated tables and context menus across the application to disable *edit* functionality when no editor exists
- Updated remaining instances of non-inclusive metadata property name display values
- Changed URL for the *about* page from */about-adaptiva-server* to */about*
- Moved Adaptiva content folder publication button into folder drop-down menus
- Upgrade UI to Angular v19
- Made object explorer *Show all* by default instead of selecting the top folder.
- Updated Content Push Server Policy editor to use a *time scale* input for max execution time instead of a text input
- Overhauled the UI's system for contextual menu items
- More* menus in object editors now generally contain the same options as the table row menus in object browsers
- Improved accessibility and keyboard navigation
- Added description field to Data Set Column overlay in Data Provider editor
- Moved the Health Check and Health Policy dashboard menus

- ▀ *Select X* menu functionality now exists as a button on the dashboard header
- ▀ *Edit* menu functionality now exists as a link on the Policy or Check name
- ▀ Minor layout changes in the Schedule editor UI
- ▀ Table headers tooltip text will be a description of the column if it has been provided. For dashboards, these can be set in DataProvider Editor -> Data Set -> Columns
- ▀ Changed the default selection behavior of some tables to no longer always select their row on user interactions with table fields within the app.
- ▀ Updated UI table sorting visuals
- ▀ Table now displays the sorting icon before the column heading name
- ▀ Table sorting icon now uses the primary theme color for better visibility
- ▀ Table now shows a loading state while sorting is in progress
- ▀ Updated UI display text for User Interaction Settings
- ▀ The Workflow Designer now uses the system clipboard to handle copy and paste actions, allowing users to copy and paste between tabs and paste nodes as JSON outside the designer.

#### Fixed

- ▀ Fixed issues with the auto location editor not saving user changes
- ▀ Fixed an issue where ConfigMgr collections were not visible in the Admin Portal
- ▀ Fixed an issue where Custom Tool editor incorrectly validated install path after first save
- ▀ Fixed issues where Business Unit selections for Cycle Pauses did not persist as expected
- ▀ Fixed an issue in Patch Express Guided Setup where a user would be able to click through to invalid pages in the subwizard
- ▀ Fixed an issue where the UI allowed users to add more than one MSI detection rule to Intune apps
- ▀ Fixed an issue where the UI allowed additional Intune detection rules after adding a PowerShell detection rule
- ▀ Fixed an issue where the All Clients toggle on the licensing page would not reflect correctly when a user cancels from the overlay
- ▀ Fixed an issue where tables with persisted states did not visually reflect persisted table filters
- ▀ Fixed validation and unintuitive time duration input in recurring interval Schedule UI
- ▀ Fixed an issue where Object Lists within a Webform marked as required would not display or output required errors
- ▀ Fixed an issue where users could not create new custom Workflow Activities
- ▀ Fixed an issue where the web-based Workflow Designer did not allow users to specify multiple external node properties targeting the same node and property name
- ▀ Fixed an issue where the UI expected the wrong data type for array index expressions in the Workflow Designer
- ▀ Fixed an issue where the Workflows browser page did not correctly default to showing all Workflows
- ▀ Fixed Action Editor bug preventing some Windows File System actions, as well as action parameter validation

- Fixed an issue where users could not drag and drop Adaptiva Content to change parent folder
- Fixed an issue where authenticated user sessions were not properly persisted in the UI, causing users to have to log in more frequently than desired.
- Fixed a race condition that sometimes caused the UI to display an inaccurate deployment state after clicking *Save & Deploy*
- Fixed dashboard behavior when clicking on the *Error Occurred* section of the Flex Controls pie charts, so that the table filters to show all items that errored out.
- Fixed an issue where the web-based Workflow Designer did not have a customizer implementation for action rows
- Fixed an issue where the UI failed to reconnect to the server's notification channel after initial disconnect
- Fixed an issue where object selection lists for Patches did not display the version
- Fixed the snooze duration buttons for user interaction settings
- Fixed an issue where the property editor window for the Workflow Designer ran off the edge of the screen due to custom resizing
- Fixed an issue where attempting to delete multiple Workflows through multi-selection menu resulted in a permissions error

#### Removed

- Removed the *Export* menu item option for Customized Products as it's not supported by the server
- Fixed bug preventing resource loading when showing editor changes

## Build 9.1.965.58

Release Date: 3/3/2025

Early Adopter Release Date: 2/18/2025

### Download

#### [Build 9.1.965.58](#)

*Note: Please email [ticket@adaptiva.com](mailto:ticket@adaptiva.com), or open a ticket from the support portal, to receive the password to extract the ZIP file.*

### General

#### Added

- Prevent component upgrade using a different type of installer than was originally used.

#### Changed

- Updated bundled JRE to 8.442.06.1

- ▀ Support for directly writing thread or CPU dump into the ThreadInfo log instead of using logger
- ▀ Changed OneSite for VMware to OneSite for Workspace ONE

## Server

### Added

- ▀ Valid OS versions for the Intune product are now retrieved on-demand instead of hard coded.
- ▀ Intune apps now validate they have a legal number of PowerShell and MSI detection rules.

### Changed

- ▀ Updated bundled nginx to 1.26.2

### Fixed

- ▀ Fixed issue where calculating changed metadata properties during feed processing was locking the server
- ▀ Fixed issue where client tables spawned from Web UI could spawn excessive threads on server
- ▀ Fixed issue where disabling patch express would result in errors when deleting deployment bots
- ▀ Intune Apps with PowerShell detection rules could not be decoded on Intune's side.
- ▀ Upgrade to 9.1 failing if a Health policy referenced a custom schedule and a health check with a form screen.
- ▀ Tenable Security Center no longer uses asset upload schedules configured for Tenable Vulnerability Management (cloud).
- ▀ Additionally, outgoing HTTP connections are now correctly closed.
- ▀ Fixed issue where Tenable returned an undocumented vulnerability age

## Client

### Added

- ▀ Added Tenable Patch P2P client MSI

### Changed

- ▀ Made policy hash verification request a persistent message

### Fixed

- ▀ Repeatedly querying STUN servers when client could not communicate causing timeouts.
- ▀ Corrected name of client installer post install or upgrade. Helps with auto upgrade and P2P client installation.
- ▀ Fixed issue where uninstallations would not detect interfering processes to wait for correctly
- ▀ Fixed issue where deployment result status would be sent before deployment progress status for a patch

- ▀ Fixed issue where prerequisite install array would not be evaluated correctly during patch deployment
- ▀ Ignore the server suggested Wi-Fi subnet range when local IP address no longer in range.

## UI

### Added

- ▀ Added a shortcut menu item for Patching Strategies to re-submit applicable patches without having to disable and reenable the strategy
- ▀ Added support for including objects referenced in scripts when exporting WebForm objects
- ▀ Added the ability to remove legacy launch forms from the web-based Workflow Designer
- ▀ Added Tenable dark theme and restrict theme changes to Tenable themes when using TPM

### Changed

- ▀ Improved user experience for adding license keys
- ▀ UI now clears the license key text input after submission and cancellation
- ▀ UI now automatically focuses the license key text input when opened
- ▀ Significantly reduced the amount of network requests required to construct trees for SCCM Applications and SoftwareUpdates

### Fixed

- ▀ Fixed a typo in the auto-generated TypeScript definitions for Workflow execution APIs in the Form and Dashboard scripting sandboxes
- ▀ Fixed an issue where the "show all" button did not work as expected for SCCM Applications and Software Updates
- ▀ Fixed an issue where OneSite for Intune Cloud Content Settings UI did not load
- ▀ Fixed an issue where Rollback and RollbackTo objects did not expose the expected context menu items
- ▀ Fixed an issue where the return value preview for Sensor Action Expressions was illegible on dark themes
- ▀ Fixed an issue where "save" buttons in the editors for Client and Server Workflow Execution Policies did not enable and disable as expected
- ▀ Fixed an issue where the WorkflowName property on the Start node did not reflect the new name set during save-as

## Build 9.1.965.12

Release Date: 10/31/24

## Download

### [Build 9.1.965.12](#)

*Note: Please email [ticket@adaptiva.com](mailto:ticket@adaptiva.com), or open a ticket from the support portal, to receive the password to extract the ZIP file.*

## General

### Fixed

- Deleted the persistent workflow objects with partial information on startup
- InternetP2Ptester executable now downloads the list of servers to use if no custom servers are specified
- Fix missing **StringLike** filter condition upgrade error

## Server

### Changed

- Do not flush and reload license state on client removal by default.

### Fixed

- Fix for bulk messages possibly merged and discarded in case of target client count is more than configured batch size
- Do not import minimum client build groups if scope has not changed
- Fixed SQL statement that was crafted with an arbitrarily long IN() clause for getting client list
- Fixed an issue where Content Push Client Policies could be generated with invalid Command Execution Settings
- Fixed a condition in async content receipt uploading, which can cause deadlock with other threads
- Fix slow cycle table loading by showing total device count instead of affected device count
- Fix upgrade error when translating cycle history with no start time to a cycle
- Fixed an issue where the server would schedule cycle workflow launches before start time has passed
- Increased the SQL column size of the name and description fields of Falcon host groups
- Clean **OfficeClientMapping** table before creating primary key
- Servers failing to send their pre-activation key to relays
- Fixes for schedule migration failure involving **InventoryPolicies**
- The **contentType** field within **SlimFeeds** will now be persisted in the database
- Changed default content type for feeds to EZ format
- Clear template business unit addition settings for invalid enabled strategies on upgrade to 9.1.965.x
- Fixed an issue where the server would log errors about missing system configuration default values



- Fixed deadlock between **ObjectManager** and vulnerability management integration components on server startup

## Client

### Fixed

- BR data uploader was using incorrect IP address for sending data for VPN clients
- Set **BulkF** receiving transport based on the received Bulk message
- Fix for updating **AdaptivaProduct** WMI instance on client post upgrade
- Fixed issue where patch status would be discarded by **P2PRing** when scans occurred in quick succession
- Fix for 401 errors with relay communications after new client handshake
- Fix upgrade error when deserializing patch deployment result
- When resolving prerequisite IDs to install, respect exceptions in place for the prerequisite

## Web Portal

### Added

- Added a system configuration key, **webui.app\_display\_name**, to set the display name used for the Web UI application. Defaults to **Adaptiva**
- Added support for UI themes with custom logos on the login page
  - Set the default theme through system configuration setting **webui.default\_theme**
- Added access to all Flex Controls features for OneSite Patch Express

### Fixed

- Fixed an issue where the web portal did not properly set or save the default Content Push Command Execution Settings **waitduration**
- Fixed an issue where the web portal did not properly clean up table data API sessions, potentially resulting in high CPU utilization on the server.
- Fixed an issue where Microsoft Defender was referenced in the web portal as "Windows Defender"
- Fixed an issue where the Web Workflow Designer occasionally threw errors attempting to load the Workflow Activity Palette.
- Fixed an issue where Web Workflow Designer marked saved Workflows as changed immediately upon load.
- Fixed an issue where Workflows failed to save due to user-defined array property data type mismatch error

# Build 9.1.965.9

EA Release Date: 8/26/24 (EA Build 9.1.965.4)

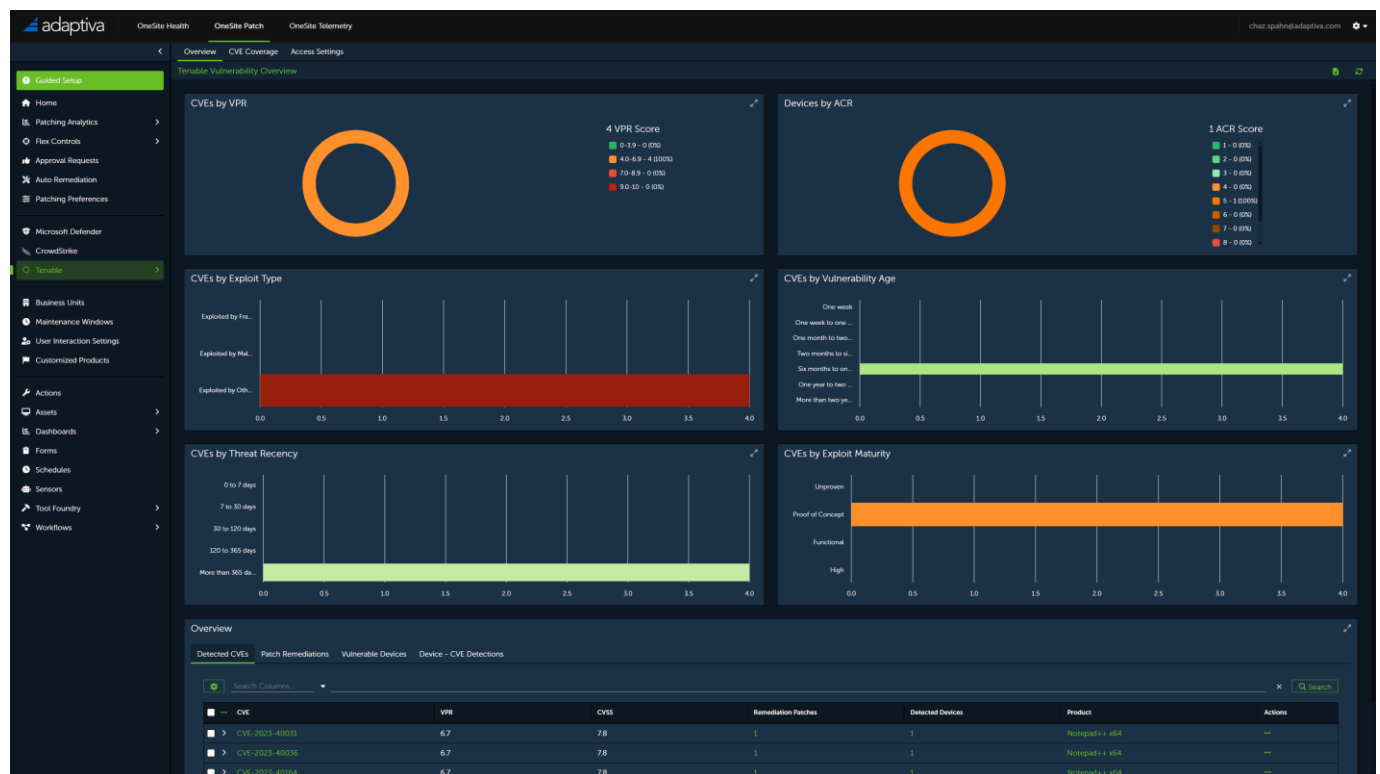
Release Date: 10/2/24

## Download


### [Build 9.1.965.9](#)

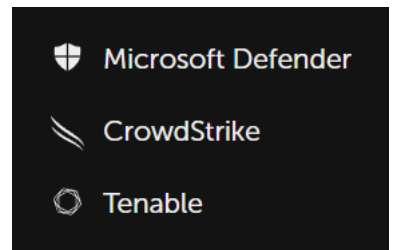
Note: Please email [ticket@adaptiva.com](mailto:ticket@adaptiva.com), or open a ticket from the support portal, to receive the password to extract the ZIP file.

Warning: Support for SQL versions has changed, and SQL Server 2014 has been deprecated. If you are running SQL Server 2014, you must upgrade to a supported version BEFORE you upgrade Adaptiva Server.

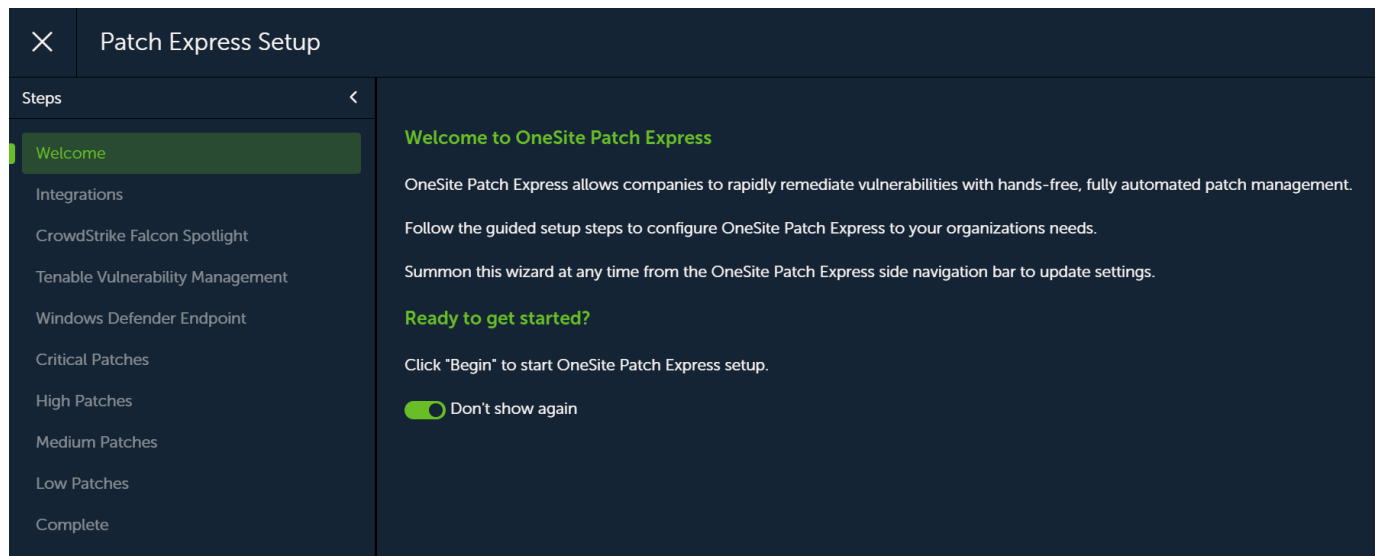


## Highlights!

-  Integrate OneSite Patch with your favorite Vulnerability Management tool for increased functionality
  - CrowdStrike Falcon Exposure Management
  - Microsoft Defender for Endpoint
  - Tenable Vulnerability Management
  - Tenable Security Center



- ▀ Flex Controls - Ability to comprehensively manage patch deployment, blacklisting, exceptions, pause/resume, rollbacks
- ▀ OpenID Connect (OIDC) authentication with different vendors like Microsoft, Google
- ▀ Dell, Dell Server, Lenovo, HP drivers support
- ▀ Dashboard updates and new dashboards
  - Per Product
  - Per Patch
  - Per Device
  - Per Device – Per Product
  - Vulnerability Overview (Tenable Integration only)
  - CVE Coverage (Tenable Integration only)
- ▀ Policy verification system and manual control
- ▀ Build/modify workflows in the new web-based designer
- ▀ Turn workflows into executables with the new Tool Foundry in Web Portal
- ▀ Script like a champion with the new PowerShell Cmdlets in Web Portal
- ▀ Simplify configuration with the new Setup Wizard for OneSite Patch Express



## General

### Added

- ▀ All map types are now able to be processed by the dictionary workflow node
- ▀ Password reset support
  - On cloud activated servers, users may request a password reset email which will let them update their password and reactivate their login
  - SMTP server configuration is required
- ▀ Progress logging for deployed schedule migration
- ▀ Password obfuscation in workflow logs when property is named password or secret

## Changed

- Updated bundled JRE version to 8.422.05.1

## Fixed

- Heap and CPU dumps not working during setup
- Fixed issue where workflows could not be paused when executing the iterate operation over a property bag
- Memory management not running during setup
- Thread state dumping does not start until after **ObjectManager** starts.
- Fixed issue where terminate workflow node would not immediately terminate when called under a looping activity
- Fixed issue where workflow execution node would fail to detect launched workflow termination
- Fixes to suspend and resume behaviors of certain workflow nodes; **WorkflowExecutor**, **Async**, **SingleContentDownloader**. These issues would leave certain workflows in suspended mode

## Server

### Added

- Added **ApprovalRequestHandle** property to allow multiple approval requests to be created with the same activity
- Added built-in Default Notification Cycle workflow for notification settings for Patching Strategies and Deployment Channels
- Added Flex Controls to consolidate administrative controls for the patching process
- HSTS header option for web UI, managed in the registry with the **webui.hsts** value
- New license management UI and backend system to support SKUs based licensing.
- Added ability to exclude products from an 'Include All Products' patching strategy
- Policy system improvements
  - Complete end-to-end automatic policy verification system
  - Fast policy dispatch without SQL persistence
  - Removed policy status SQL tables
  - Manual policy sync option for per device, per group, per business unit, or per policy
- Added product-based exceptions
- Added **Risk.SecurityExposure** property to metadata
- Progress logging of deployed schedule migration
- Validation for objects before performing deployed schedule migration
- Pre-load the office id vs parent office id map on startup. On-demand load is still there to support changes

### Changed

- Set user interaction settings in All Clients Business Unit to 24-hour reboot warning by default
- Improvements to real-time updating of client id vs office id in **OfficeClientMapping** SQL table
- Content receipt processing enhancements

- GroupMembershipTable\_membership tables are replaced with single group\_client table
- Do not process OneSite Wake policy updates during server upgrade. OneSite Wake policies are never updated by server upgrade.
- Emails sent by the password recovery and OIDC invite systems will now use the configured SMTP server. They will only use the Twilio integration if a SMTP server is not configured.
- Updated SQL indices for messaging tables
- Added **NO\_LOCK** when querying a **AdaptivaClientView** view
- Manual patch scans and failure reset requests will now only accept strategies or business units for specifying target machines
- Persistent Adaptiva messages are removed periodically every 24 hours, instead of immediately
- Reverted default value change for execution settings in workflow object, this led to false editing of all shipped workflows
- Changed default snooze reminder to no reminder
- Changed default max snooze duration to 8 hours

#### Fixed

- When adding approvals, only publish content for added approvals instead of all approvals in the policy
- Fixed blacklisted patches remaining on server after feed is uninstalled
- When exporting dashboards, limit the string to 31 chars, passed in as a sheet name to allow data to be properly exported
- Fixed issue where users would be duplicated in approval requests if they were in both the regular and backup approver roles
- Nonstandard error entity when Operations Manager APIs fail
- Added validation to ensure notification cycle workflow is set when notification settings are defined in Patching Strategies and Deployment Channels
- Patch UI will now show correct office name when displaying clients
- Fixed issue where deadlock may occur when removing patching license
- Fixed issues with policy in-progress membership cache updates
- Fixed an issue where rollout cycle workflows would not launch
- Content storage settings changes for default ConfigMgr content publication settings not updating in database
- Fixed issue where scans last 30 days metric would only count number of distinct clients scanned in last 30 days
- Fixed edit permissions for OIDC Provider objects
- Fixed **EPH\_SP\_REMOVE\_CLIENT\_DETAILS** to properly update **EPH\_CURRENT\_CHECK\_SUMMARY**, resolving issues with unknown check counts and updated failed remediation counts
- Removed ability to sort top 5 non-compliant products, top 5 riskiest patches widgets on patch landing page
- Added a change which stops displaying tomcat version in 404 error page

## Removed

- Removed policy status system
- Removed runtime web app compilation and all associated logic, utilities, and assets, significantly reducing the size of the Adaptiva Server Installer
- Removed the **Screen** object
- User account administration must be performed in the Web Portal. The workbench is deprecated for Adaptiva User Account administration.

## Security

- Passwords present in server answer files are now encrypted

## Client

### Added

- Added ability to override blob WAN transport to LAN transport.
  - Config: **blob.always\_use\_lan\_transport**
  - Default **false**. If set to true blob download will always use LAN transport for downloads
- Started, but not yet completed, patch deployments will be canceled if the desired state is updated to an incompatible value
- Added metric scan results logging on client
- Graceful handling of new metadata on outdated clients
- Support for patching metadata where prerequisites and follow-ups are an and/or tree
  - Old clients will report failure with "Prerequisite [0] is not present" for these patches
- CAB files that are no longer referenced by metadata will be removed from client folder
- Client configuration to control maximum number of concurrent internet uploads allowed. Default 1000

### Changed

- Append server supplied CDN URLs to the client supplied URLs for use.
- If client is not capable of IP2P do not seek or suggest internet sources.
- Trust certificates for content download URLs. Default **false**, only URLs having valid HTTPS certificate would work

### Fixed

- **ApplicationInstalled** sensor
  - Added correct results for scanning 64-bit programs on a 32-bit system
- Client upgrade was setting old build values even if upgrade failed
- Fixed patches not being scanned after product is scanned as **uninstalled** for first time
- Added handling for cases where client database corruption would occur, but we would not reset the client
- Intune EXE generation does not stop when preparing installer EXE fails
- Intune installer logging to C:\logs until machine is restarted
- IP2P bypass routing was only considering first gateway

- ▀ Fixes for message encoded size when message value or attribute value contains non-ascii characters
- ▀ Patches of newly uninstalled products will be scanned as not applicable before removal
- ▀ Fixed issue where product would report installed status until next daily scan after completing patch uninstall
- ▀ Gracefully handle reboot request across Adaptiva Client service restarts
- ▀ Reboots scheduled before a service restart will not reschedule on startup
- ▀ Only send deltas when patch deployment is cancelled due to superseding install already running
- ▀ Fixed issue where windows product enabler would kill WUA process when it was already initialized
- ▀ Fixes for a rare transport driver crash during client service stop
- ▀ Patch installs remaining in progress until machine is rebooted after client service is restarted
- ▀ Fixed issue where installed prerequisite software was not detected when deploying a patch
- ▀ Fix upgrade of clients with old definition of patch deployment result
- ▀ Fixed an issue where policy execute thread would not release its policy lock when policy gets deleted during the operation
- ▀ Do not consume product feed on client unless product is present
- ▀ Reboot notifications will now display immediately upon reboot request
- ▀ Fixed customized product property merging during patch deployments
- ▀ Fixed issue where actions would not perform behavior code mapping when used in patch deployments
- ▀ Fixed null pointer exception when checking for pause state on patch that does not exist when prestaging content using server push

## Web Portal

### Added

- ▀ Added text to "All Requests" Approval Request UI to more clearly indicate read-only state
- ▀ Added Workflow Execution Policy for both Client and Server workflows
- ▀ Added support for custom logos and CSS in Themes
- ▀ Added "Dashboard Timeline" User Dashboard widget
- ▀ Added ability to override the Import Folder Settings on object import
- ▀ Added new login page graphic with subtle interactive animations
- ▀ Added explanation text to Maintenance Window editor to make clear the cumulative nature of Maintenance Window urgency levels
- ▀ Added ability to move Patch Approvals between waiting Cycles
- ▀ Added OIDC Provider browser and editor
- ▀ Added OIDC Provider support for Administrator objects
- ▀ Added **onSubmit** custom script hook for WebForms
- ▀ Added support for searching Patch Approval tables by Patch ID
- ▀ Added OneSite Patch Express setup wizard

- ▀ Added the ability to roll-back patches to the previous version, as well as to a specific version
- ▀ Added multi-select support when "importing" patch selector conditions for Patch Deployment Bots
- ▀ Added new features to enable manual Policy sync
  - Manual Policy Sync page at **/settings/manual-policy-sync** - Access this feature from the settings menu in the header
  - New menu items for Groups, Devices, and Business Units to enable manual Policy syncing
- ▀ Added a menu item to Workflow Designer toolbar to allow users to save & deploy a Workflow in one action
- ▀ Added built-in documentation for Adaptiva custom JavaScript APIs
- ▀ Added **Strategies Including this Patch** column to search parameters in the Patch Status table
- ▀ Added new platform-level side-nav item: Tool Foundry
  - PowerShell Cmdlet support
  - Custom Tools support
- ▀ Added **Trigger Properties** selector to Patching Strategy editor
- ▀ Added User Dashboard scripting features
  - Take control with User Dashboards by leveraging the power of JavaScript and built-in Adaptiva APIs.
  - Dashboard scripts execute securely within the Adaptiva JavaScript Sandbox Protocol.
  - Added new Adaptiva JavaScript namespaces
    - `adaptiva.logging.ui`
    - `adaptiva.overlays`
    - `adaptiva.snackbars`
    - `adaptiva.auth`
    - `adaptiva.dashboards`
  - Added new Dashboard Widget to User Dashboard Designer: Dashboard Button
    - Author a button in your User Dashboard to execute a custom JavaScript callback to invoke supported Adaptiva APIs.
    - Pipe any Data Set into your button and reference its data within your on-click logic with strongly typed row schema.
  - Added scriptable menu item configurations to Dashboard Table Component
    - Add row and header level menu items to your User Dashboard Table widgets and configure them to execute a custom JavaScript expression with intuitive, contextual arguments
- ▀ Added default sort column configuration support for User Dashboard table widgets
- ▀ New scripting hooks for web-based form authoring
  - **onLoad**
  - **onChange**
    - This hook is intended to replace the "advanced behaviors" feature in forms



- Existing "advanced behavior" configurations will be automatically converted into an **onChange** script hook
- Secure API invocation support for WebForm script hooks
- ▀ Added keyboard navigation and hotkey support to the Workflow Designer
  - Users can now select, navigate, collapse, and edit nodes with new default or their own assigned hotkeys

#### Changed

- ▀ General accessibility improvements
- ▀ Alphabetized platform-level side-nav top level features
- ▀ Updated platform-level side-nav icons
- ▀ Upgraded to Angular 17
- ▀ Updated disabled states and icons for cycle operation control buttons
- ▀ Hid some advanced platform features for customers who don't have any "enterprise" products
  - Workflow Designer
  - Tool Foundry
  - REST API Endpoints and Configuration
  - Actions
  - Sensors
- ▀ Improved search functionality for enumerated values in Patch Approvals, Approval Requests, and Cycles
- ▀ Migrated OneSite Health Check Forms to WebForm objects instead of form-type Screen objects
- ▀ Changed the Onesite Health Policies editor to improve load times on health check forms
- ▀ Updated font to "Museo Sans" to match latest Adaptiva brand standards
- ▀ Simplified product licensing experience
- ▀ Changed user type selection from radio button to dropdown menu in Administrator editor
- ▀ Improved UI logging for Dashboard Widgets

#### Fixed

- ▀ Fixed an issue where Administrator phone number area codes were not always saved
- ▀ Fixed issue where UI did not fail gracefully when encountering unsupported browser locales
- ▀ Fixed an issue where dropdowns in Business Unit Content Prestaging Settings did not correctly set disabled state based on inheritance
- ▀ Fixed an issue where some dashboard widgets would not be exportable when selected.
- ▀ Fixed an issue with font color in the **datepicker** widget
- ▀ Fixed errors in the file uploader widget on large files (>2GB)
- ▀ Fixed an issue on some editors where number-only lists would not enable the new value button if typed fast enough
- ▀ Fixed issue where object selection overlays included row-level action menus that shouldn't be available in a selection context
- ▀ Fixed a UI memory leak when adding and deleting several comments in a Patch Approval Delta

- Fixed an issue where search and sort features did not take effect for Patch Approval tables under the "View Changes" delta view
- Fixed an issue where trend charts did not react to dashboard date range changes in the Patching Patch State dashboard
- Fixed an issue where exporting Device Details from the Per-Device Patching dashboard exported three identical sheets
- Fixed an issue where Homepage dashboard showed the number of running Rollout Cycles for the number of running Deployment Channels and vice versa
- Fixed an issue when opening a new editor after using "save as" to copy an object
- Fixed an issue where User Dashboard export didn't work with parameterized dashboards
- Fixed an issue where Business Unit trees showed a non-functional search bar within Business Unit selection prompts
- Fixed an issue where Customized Products UI did not properly reflect the state of the Customizer UI field
- Fixed a jarring layout shift on initial Patching dashboard UI loading
- Fixed an issue where resizable UI sections frequently stopped tracking mouse movements
- Fixed an issue in the Live WAN Downloads page where deleting all priority or transport overrides had no effect
- Improved visibility of pagination buttons on darker themes
- Fixed an issue where users were not able to specify a "series" column when configuring a User Dashboard Chart Widget
- Fixed issues in Customized Products editor UI where some products did not render customization options
- Fixed an issue in Customized Products where UI did not fail gracefully when encountering unknown patch metadata schema changes
- Fixed an issue where dashboard gauge list used a nested dashboard container, resulting in duplicated data provider API calls
- Fixed a session management issue in certain Patching dashboard widgets that led to SQL performance degradation over time
- Fixed an issue where some Windows File System Actions showed the wrong file system method type

#### Removed

- Removed problematic "advanced search" feature from Asset -> Devices table
- Removed **Legacy Dashboards** view
- Removed **Run Selected Health Checks** button from Health Checks object browser page in favor of the table header menu item that does the same thing
- Removed UX Designer
- Removed enumerated **Purpose** column from simple search options for Workflows

## Build 9.0.963.6

Release Date: 7/11/24

### Download

#### [Build 9.0.963.6](#)

*Note: Please email [ticket@adaptiva.com](mailto:ticket@adaptiva.com), or open a ticket from the support portal, to receive the password to extract the ZIP file.*

*Note: Updating to this release will delete the patch status history information from the database. This information will not begin collecting again until the clients are updated to this version. Be sure to begin the client upgrade as soon as the server has been upgraded.*

### General

- ▲ Upgraded JRE to 8.412.08.1
- ▲ Workflow: Fixed **AsyncEventListener** race condition where listener terminates before all handlers terminate

### Server

#### Added

- ▲ Restored OneSite Patch SQL compatibility to SQL Server 2016
- ▲ Provide WiFi office range to clients in ping replies
- ▲ New SQL schema for comprehensive patch status and updated dashboards using the new schema
- ▲ Super admin can view all patch approval requests now
- ▲ Ability to export/import all intent objects
- ▲ Validation of expressions in customized product extensions
- ▲ ConfigMgr: Added ability to specify separate SQL authentication for child site DB connections
- ▲ Control settings for group membership evaluations
- ▲ Lowered memory usage for empty content receipts

#### Fixed

- ▲ Fix NPE in cycle deployment status UI when business unit in approvals no longer exists
- ▲ Fix bug where patches were not automatically routing as they became newly applicable on clients
- ▲ Faster PXE request processing on server
- ▲ Faster lookup for office id if any for a given IP address
- ▲ Handling of missing blob block files during content un-publication
- ▲ Fixed an issue in Bunny Storage uploads when a proxy is configured
- ▲ Fixed Tenant child BU addition failures
- ▲ Patch exceptions were not applying to target BU changes
- ▲ Cycle pause/running state was not preserved across server restart.
- ▲ Paused cycle termination did not stop the underlying workflow instance.

## Client

### Added

- ▀ Auto-reset client when DB corruption is detected in SQL monitor and on upgrade
- ▀ Auto-restart client service when DB is found to be closed in SQL monitor.
- ▀ Auto retry client startup once after failure to start.
- ▀ **InterferingProcessesToWaitFor**: for msixexec wait only when more than one process is running
- ▀ Driver patch support: Dell PC, Dell Server, HP, Lenovo drivers
- ▀ Reboot notification improvements:
  - Added new **reboot\_manager.reboot\_warning\_delay** config property to warn users before a reboot is about to happen
  - All notifications are windows toast notification type
  - Ability to customize notification icon
  - Re-display notification immediately on invalid selection
  - Show time of reboot in the notification
  - Admin control to always show notification even when do not disturb is ON.
  - Always show final reboot notification even when do not disturb is ON.
  - Handled snooze reminder during reboot notifications
- ▀ Client will use WiFi office range as received from Server to enforce communication boundary as opposed to subnet range.
- ▀ Separate client setting for blob download priority: **blob.content\_download\_priority**
- ▀ Dynamic queue for OneSite requests to Server
- ▀ Improvements to IP2P retry behaviors.

### Fixed

- ▀ Include installation in progress and installation failed patches when counting product and device risk score
- ▀ Installation Failed patching status will now send the operation failed as well
- ▀ Deployment results will now send every time, even if failure is the same as previous failure
- ▀ **ApplicationInstalled** Sensor: Added correct results for scanning 64bit programs on a 32-bit system
- ▀ Fixed **CacheMigrationTool**, it was failing when used on 64-bit client
- ▀ Fixes for message encoded size when message value or attribute value contains non-ascii characters
- ▀ Fixes for windows patch scan failures and auto restart WUA if needed
- ▀ Fixes for managing memory when consuming larger feeds
- ▀ BRP2P: check data block availability when handling future source query message
- ▀ Updated uninstall process to not restart the App-V service if integration is not enabled

## UI

### Added

- ▀ Added "Devices Waiting for Reboot" metrics in Patching Analytics Devices dashboard
- ▀ Added "Reboot Pending" status to Device Status table in Patching Analytics Devices dashboard
- ▀ Added "Reboot Pending" status to Device Details section in Patching Analytics Per-device dashboard
- ▀ Added ability to request deployment failure count resets on clients from Web UI
- ▀ Changed compliance to desired state consistency for patches
- ▀ Added counts for patching strategy coverage in various dashboards
- ▀ Added business unit counts and lists for devices in various dashboards
- ▀ Added various built-in user dashboards for greater visibility in the patching product
- ▀ Added ability to view deployment status of approved patches from cycles UI

### Fixed

- ▀ Fixed issues with Patch Deployment Bot patch selector filters
- ▀ Fixed issue where object selection overlays included row-level action menus that shouldn't be available in a selection context
- ▀ Fixed an issue where "Devices Being Patched" metric in Patching Analytics Devices dashboard did not display a device count
- ▀ Fixed User dashboard export and subscriptions

## Build 9.0.963.5

EA Release 9.0.963.4106

EA Release Date: 3/7/24

### Download

#### [Build 9.0.963.5](#)

*Note: Please email [ticket@adaptiva.com](mailto:ticket@adaptiva.com), or open a ticket from the support portal, to receive the password to extract the ZIP file.*

### General

- ▲ CDN access and security improvements:
  - Strengthen API retry handling for Bunny Edge Storage
  - Retry code has been added to all CDN storage APIs.
  - Registry settings related to CDN and Delta Series have been moved from the contentsystem component to their own, separate components.
  - ConnectExceptions have been added as a retry trigger for CDN storage APIs.
  - Various configuration options have been added to the registry to tweak the behavior of CDN and Delta Series interactions going forward.
  - Expiration times have been reduced for secured URLs generated by customers.
  - Retrieval of CDN settings will now also shuffle the secured URL generation token.
  - A configuration option has been added to automatically reshuffle the CDN settings after a certain period.
- ▲ Fixes a crash when an encryption key with an invalid length is provided to internal cryptography functions
- ▲ Thread dumps moved to separate component log file **ThreadInfo.log**
- ▲ Do not double attempt REST API in case of failures. Also do not recreate http client on failures
- ▲ Fix in **TimedDoWhile** workflow node. It was not correctly yielding the workflow thread during wait
- ▲ Updated bundled JRE to 8.402.08.1
- ▲ Updated bundled Nginx to 1.24
- ▲ Updated Tomcat to 9.0.86

### Server

- ▲ Dashboard sql: Product Status table: Product status errors when searching by column values
- ▲ Upgrading server with custom screens disabling the web UI
- ▲ Waiting rollout cycles are automatically terminated when creator cycle finishes execution
- ▲ Computing of all groups in base group scope tree was incorrect.

- ▲ HTTP message sending over relay from server would not immediate complete, leading to very slow message communications
- ▲ Upgrading from 8.3.960 or earlier failing when super admin password is changed
- ▲ Removing client patching data when group membership has not occurred threw an unexpected exception
- ▲ Updated auto upgrade workflow for update number padding.
- ▲ Restarting service when approvals are ongoing will not throw an exception retrieving approval request state
- ▲ Optimize blob publishing by writing entire intermediate block files at once and publishing each block in a background thread after it is written
- ▲ Reboot delay time calculation when user logs off
- ▲ Allow other data type conversions for datetime variant
- ▲ Dashboard query updated for patching product dashboard.
- ▲ Remove client entries for group from GroupClientMapping table when group is deleted
- ▲ GroupMembershipEvaluationManager.performPartialMembershipEvaluation() also update membership of dependent groups
- ▲ In SensorGroupScope, exclude rows marked deleted
- ▲ Add logging and NPE checks to patching policy manager
- ▲ Shipped patch maintenance windows did not use correct durations.
- ▲ Mandatory install is supported in patch exception desired states.

## Client

- ▲ Added **enable\_sccm\_delta\_bits\_max** client config property. This will automatically set the maximum values for **TimeoutMinutes** and **NoProgressTimeoutMinutes** in **CCM\SoftwareUpdates\DeltaBits** if the Configuration Manager client is installed. These are supported in Configuration Manager build 2309 and later.
- ▲ Fixes to reboot manager timing calculation w.r.t to user logon and logoff events
- ▲ MSI installers were specifying program files (x86) as install folder, fixed to use program files
- ▲ Do not queue deployment completed patch scan when we were not able to queue the deployment request
- ▲ Maintenance windows compute fixes
  - Patch deployments fail with "negative delay" message
  - Patch deployments do not respect maintenance window for pre-deployment reboots
  - Maintenance windows do not properly handle override durations
- ▲ Report WUA search success with error as success and also report error as warning

## Build 9.0.963.4

Limited Release

### *New!!*

- ▀ UI: Cycle history is available in the UI now.
  - Deployment -> Patching Cycles -> History
  - Deployment -> Deployment Cycles -> History
  - Deployment -> Rollout Cycles -> History

### *General*

- ▀ Update http core libraries to 4.4.16.
- ▀ HTTPS server now supports the use of certificate chains instead of single certificate
- ▀ Updated DotNetReflection.dll and Visual C Runtime DLLs for client and server

### *Server*

- ▀ Added **Include Table Search** option to Dashboard Table customization, which toggles the presence of the table search field
- ▀ Updated Dashboard Filter UI to display a table of displays and values when adding a combo-type filter
- ▀ Added multi-select checkboxes to User Dashboard Browser, allowing for multiple exports from the table header menu
- ▀ Added default sorting capability to dashboard tables & set default sorting option for various Patching dashboards
- ▀ Twilio, Teams, WhatsApp communication fixes
- ▀ Check for patch content URLs changes in feeds, and update content information
- ▀ On feed publication always process the patch contents if they were published previously
- ▀ ConfigMgr group evals were not triggering on CAS.
- ▀ Queue evaluations of applicable groups when a new client joins.
- ▀ When a new client joins BU which is part of a certain strategy and this client has applicable patches and those patches were not applicable for this strategy before, they will be routed now.
- ▀ Added duplicate name constraints to intent objects
- ▀ Disallow license operations from workbench. Web UI will be needed
- ▀ Uninstall/rollback approvals may only be submitted for patches that support uninstall
- ▀ Fix: Group eval thin threads were not deleted when corresponding object was already deleted
- ▀ Uninstall/rollback approvals may only be submitted for patches that support uninstall
- ▀ BR RVP consumers were not registered in some cases when machine becomes RVP
- ▀ Fixed an issue in User Dashboard Filter UI where rows would not be removed from the table after deletion



- Fixed an issue in User Dashboards where **Update Filters** would not update the dashboard with selected filter values
- Fixed an issue where Adaptiva Patch Content showed the wrong source type displays
- Fixed an issue where column value replacement macros in Data Set column route fields did not work for URL query params
- Fixed a race condition in the UI's authentication protocol that sometimes caught 401 errors while authenticated
- Fixed an issue in the Theme editor where the color picker popup sometimes appeared off-screen
- Fixed bugs around Patch Filter Preview in Deployment Bot and Notification Bot editors
- Fixed a 404 issue when attempting to open another Administrator from within the Administrator editor
- Fixed an issue where Administrator email address field was disabled for Windows AD Administrators
- SSRS ReportCreator, required minimum .NET framework version changed to 4.7.2
- Refactored Desired State Overrides UI in Patching Exceptions editor to better support bulk operations
- Display Top 10 Most Critical Patches instead of Top 10 Riskiest Patches

## *Client*

- Fix for removing download loop among future BR P2P sources.
- Sparse file names will include file name along with id now.
- Added new config options to control maximum queue sizes for buffer and file transfers.
- BR P2P downloads can now make use of check-sum settings for adaptive transfers.
- Make countdown dialog always on top if system model
- Fix of windows install retry logic based on exception error codes.
- Delete ARP entry was not correctly handling empty/null inputs
- Adaptiva client works again in WinPE
- Fixes for pre-action sequence if specified, would not execute
- Command execution workflow activity would not exit even when the command may have finished executing.
- Fixed issue with Windows OS name being read as Windows 10 on Windows 11.
- Reboot notification dialog text was not wrapped.
- Deployments not considering progress of prerequisite deployments.
- Data for sensors used in grouping will be collected on all schedules used in those groups.
- Resolved CPU bottleneck when applying last allowed version exceptions on client
- Use correct content ID for WSUS patches prestaging requests
- Possible crash as WinHttpProxy freeing an uninitialized variable in the case of an error
- Remove H2 async option as it is blocking upgrades
- Option to switch cert store to windows.

- Added a system config **security.certificate\_trust\_store\_type** to control the settings
- The default is to use client's java key store. For windows value can be set to WINDOWS-ROOT
- ▲ Patch deployments will now wait for or will kill processes that interfere with the deployment.
  - Controlled by **sdm.interfering\_process\_wait** 0 no wait, else specified wait in milliseconds, deployments are attempted every 5 minutes until time expires.
  - Default value is wait forever.

## Build 9.0.963.3

Release Date: 1/22/24

### Download

[Build 9.0.963.3](#)

*Note: Please email [ticket@adaptiva.com](mailto:ticket@adaptiva.com), or open a ticket from the support portal, to receive the password to extract the ZIP file.*

### New!!

- ▲ MSP support
  - Create tenants
  - Tenant support in client installers
  - Tenant Business Units
- ▲ Patch Blacklist Support
  - Ability to blacklist/whitelist metadata by metadata team
  - Ability to override blacklist/whitelist metadata by customer
  - Email notification support for blacklisting changes

### General

- ▲ Support for alternate DNS name in patch approval URLs.
  - *patching.approval\_url\_server\_alternate\_dns\_name*
- ▲ Support for HTTPS based REST API for Operations Manager.
- ▲ Different dispatcher for client requests on Operations Manager to help with separating out client APIs from everything else.
- ▲ Fixed JSON mapping in Twilio/Sendgrid requests.

### Server

- ▲ License Business Units for each of current products. These will contain clients as they report their license status for each product.
- ▲ Upgraded tomcat to 9.0.82
- ▲ Added support for auto adding new/changed server IP ranges to central office.
- ▲ Controlled handling of data cleanup for un-licensed or uninstalled clients.

- ▲ Business unit save as was not resetting the patch policy value.
- ▲ All clients BU is always created now, not just for patching.
- ▲ Fixed: issues with base group scope evaluation related to grouping locks.
- ▲ Fixes in group object related to wrong iteration over scopes causing errors.
- ▲ Fixed: wrong count query in patching per product data provider.
- ▲ Fixed: situation where enabling a strategy will clear pre-existing patching process schedule, on save.
- ▲ Export to excel functionality was failing to export larger datasets in the dashboards. Also made rows to fetch to 1000 by default and configurable using `webui.default_export_row_count`.
- ▲ Fixed: issue where themes with spaces in their names were not applied within Sensor Action Expression editors.
- ▲ Fixed: issue in Patching Strategy editor where Notification Cycle Workflow selection did not properly pre-filter Workflows to correct "purpose" value.
- ▲ Do not mark superseded patches as processed when an applicable patch is submitted to a strategy.
- ▲ Added "Business Units" column to Patching and Deployment Channel Cycle tables.
- ▲ Added "Start Time" column for Patching, Deployment Channel, and Rollout Cycle tables.
- ▲ Added right-click support for Object Explorer tree view.
- ▲ Support for non-recurring schedules in maintenance windows, except ASAP schedules.
- ▲ TestMode configuration is read from cached value rather than directly from registry
- ▲ JSON deserialization issues with SCCM Applications.
- ▲ When user selected an SCCM Application with no child Deployment Types, the table showed all Deployment Types instead of an empty table.
- ▲ "Publish Parent Content" and "Unpublish Parent Content" menu items were enabled for SCCM Applications instead of only for their children.
- ▲ Approval Deltas were not working using the PatchApprovalDelta activity.
- ▲ "View Filtered Software" button in Patch Deployment/Notification Bot editors did not work if the Patch Filter tree root was an "operating condition".
- ▲ Fixed issue where object folder view displayed expand/collapse icons for folders without children.
- ▲ Unsearchable columns were not properly filtered out of "advanced search" view for tables.
- ▲ Blue button artifact appeared temporarily in some Patching UI.
- ▲ Updated patch selector with correct values for security exposure level.
- ▲ UI prevented product submission to Patching Strategies if the Strategy already contained one or more of the selected Software Products. Now, the UI will filter out duplicate Products and notify user which Products were omitted from submission.
- ▲ Object lists and browsers failed to load product-specific class definitions if the associated product had not yet been accessed in the UI.
- ▲ "View Clients" overlay view displayed a strange layout.
- ▲ Users could not delete multiple Locations at once.
- ▲ Workflow-based sensors will now overwrite the existing workflow.

## Client

- ▲ Support for executing client policies using an API on client.
- ▲ Support for on-demand cleaning up unlicensed client patch data.
- ▲ Updated transport driver with fix for very rare BSOD issue.

- ▲ WUA settings capture and restore on un-license or uninstall.
- ▲ P2PRing out of order fix when an invalid token is detected.
- ▲ Client-side feed re-processing in case of failures during download or processing.
- ▲ Missing built-in schedules are created in client setup.
- ▲ Command execution workflow activity would not exit even when the command may have finished executing.
- ▲ Fixed: AdaptivaClientInfo sensor for reading correct registry hive based on installer type.
- ▲ Fixed: Execute action on client workflow would always time-out.
- ▲ Fixed: processing OneSite ByteLevel responses using single threaded queue to unblock messaging threads.
- ▲ A new client configuration to control if windows patching is enabled on clients. `patching_client_system.disable_windows_patching`. Default is false.
- ▲ Made blob policy update debounce duration configurable and default to 300 seconds.
- ▲ Fixed: issue where client pull prestaging was not happening.
- ▲ ByteLevel: Removed lock contention when requesting publication.
- ▲ Fixed: global reference leak in native code in cab diff applier. This caused high CPU during diff application.
- ▲ Patch deployment failure behavior is reset when a new approval arrives for that patch.
- ▲ 32-bit client setup is not allowed to run when a prior 64-bit installation exists for Adaptiva client. A fresh installation of using a 32-bit installer is still allowed on 64-bit machines, however 64-bit installer is recommended for better performance. 32-bit client should ideally only be used on 32-bit OS.
- ▲ Incremental backoff connecting to relay or ops manager when previous attempts have failed. Default up to 6 minutes maximum. Earlier value was every 1 minute. Can be controlled using `cloud_relay_server.client_connection_retry_counter_threshold`.
- ▲ Patching client framework will now fetch deployed objects after RVP components are initialized.
- ▲ Removes ARP Collection Policy targets.
- ▲ Restrict client scans when patching is not licensed.

## Build 9.0.962.0

EA Release Date: 9/14/2023 (Build 8.3.961.1048)

Release Date: 10/11/2023

### Download

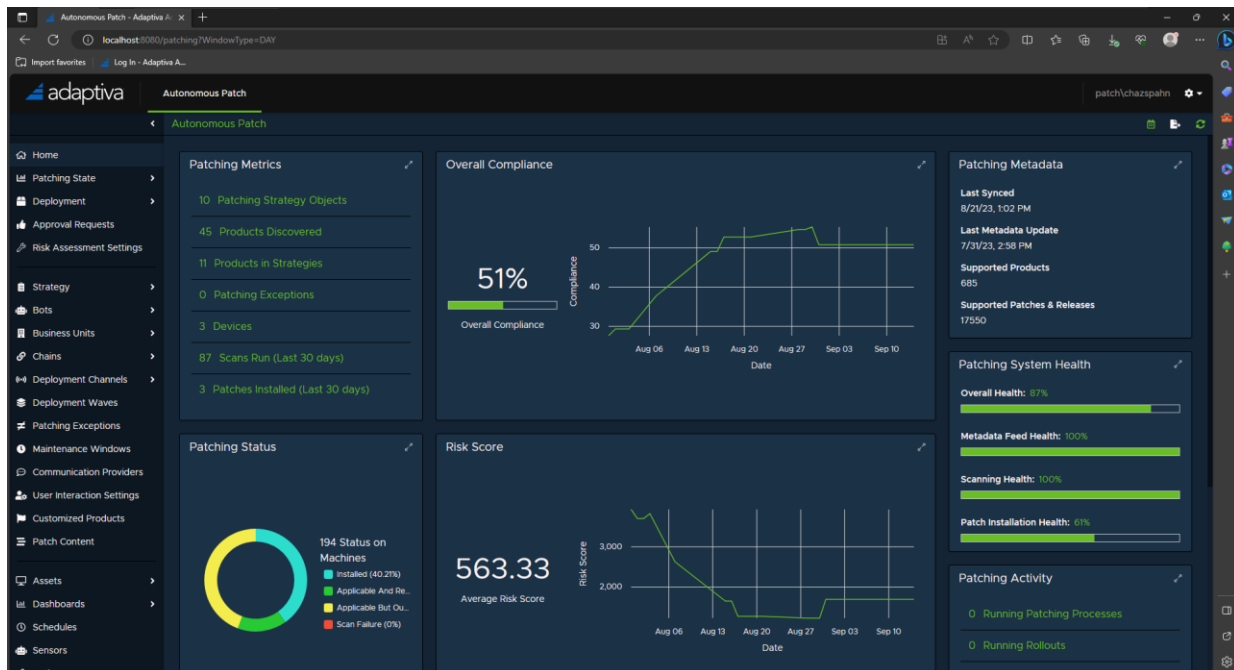
#### [Build 9.0.962.0](#)

*Note: Please email [ticket@adaptiva.com](mailto:ticket@adaptiva.com), or open a ticket from the support portal, to receive the password to extract the ZIP file.*

### New!! Autonomous Patch!

- ▲ Completely automated patching utility that allows you to model the exact behavior that you want from your patching solution.

- ▀ View your infrastructure in detailed dashboards so that you know what patches are missing and which are impacting your risk and compliance the heaviest allowing you to make informed decisions.
- ▀ Develop strategies so you can control your deployments and set your intent for rollouts.
- ▀ Author processes to define how your patch distributions should occur with approvals, gates, and other workflow steps.
- ▀ Setup Business Units to graph your infrastructure to control the rollout of patches throughout your environment.
- ▀ Create Maintenance Windows to control exactly when patches are deployed for critical systems.
- ▀ Develop Deployment Waves to create phased rollouts of your patches.
- ▀ View and control all running processes to manage your deployments in real time.
- ▀ Patch Windows OS with full strategy support.



## General

- ▀ New CDN storage option fixed for 8.1 customer server
- ▀ Updated EULA included in installers
- ▀ Schedules are deployed objects now, this helps with their efficient distribution to the clients
- ▀ Highly compressed metadata feed and feed deltas
- ▀ Support for resetting client data on server and client and perform full scan
- ▀ Support for restricting to large UDP to v1 for large response to tool foundry/AAT
- ▀ Fixes to handle license removal, enable/disable on server and client

## Server

- ▀ Update to Tomcat 9, update 81

- ▲ Update to JRE version 8.382.05.1
- ▲ Handle leak in API Foundry HTTPS method
- ▲ ConfigMgr Collection membership change detection query
- ▲ Read-only user for dashboards data access. A user needs to be specified during server setup and the specified user will be granted db-reader access on Adaptiva database.
- ▲ Fixed API Foundry HTTP handle leak. Fixes WS1 connection issues
- ▲ Adaptiva groups can use sensor-based scopes
- ▲ Intune integration executable loads Adaptiva DLLs dynamically, handles the cases where Intune management extension does not see path changes.
- ▲ User Dashboard system
- ▲ Create dashboards without writing UI scripts using a WYSIWYG dashboard designer
- ▲ Dashboard Subscription system
- ▲ American sports themes
- ▲ Dashboard data export (Patching only)
- ▲ Dashboard chart theming
- ▲ Improved localization support for dates and numbers
- ▲ Horizontal overflow scrolling for tabbed layouts
- ▲ Object import/export support in the Web UI
- ▲ Client Auto Upgrade dashboard refresh
- ▲ Data Provider schema definition updates
- ▲ Dashboard data security improvements
- ▲ Full-screen UI toggling for card sections, etc.
- ▲ Batch operations in object editors: save all, close all, etc.
- ▲ UI state caching
- ▲ Role-based access editing support in the Web UI
- ▲ SKU licensing UI
- ▲ Added "Sensors" to platform-level navigation

## *Client*

- ▲ Issue in HSQL to H2 migrations for 8.0 or earlier Adaptiva client
- ▲ Blob block deletion on client, when corresponding content is deleted
- ▲ Changes to continue the PXE enabled RVP even when port bind fails

- ▲ 64-bit Adaptiva Client.
  - 32-bit client is still shipped for any 32-bit OS needs.
  - Upgrades will automatically migrate existing installed clients to 64-bit
  - Adaptiva client registry hive will also be moved to 64-bit, 32-bit is still preserved in case some integration is dependent on it being present.
- ▲ Fixes related to file manifest and local path
- ▲ Client blob files cleanup when corresponding content is unpublished
- ▲ PXE RVP election enhancements
- ▲ Handling of on-premises clients not able to handshake when their older tokens are purged
- ▲ Separate message queue for PXE requests
- ▲ Support for handling client startup when manual setup is left running for long time

### *Endpoint Health*

- ▲ Dashboard and SQL fixes
- ▲ Some SQL query optimizations and workflow fixes

## Build 8.1.937.0

Release Date: 6/5/2023

### *Download*

[Build 8.1.937.0](#)

*Note: Please email [ticket@adaptiva.com](mailto:ticket@adaptiva.com), or open a ticket from the support portal, to receive the password to extract the ZIP file.*

### *Server*

- ▲ When reusing Adaptiva Client IDs, resolved issue where client protocol was remembered, possibly sending response as HTTP instead of UDP

### *Client*

- ▲ Made ByteLevelP2P and BlobServer logs larger on client

### *Endpoint Health*

- ▲ Updated several stored procedures to resolve issue when clients are reporting with timestamps in the future
- ▲ Added indexes to several EPH tables to improve reporting performance

## Build 8.1.936.1000

Early Adopter Release Date: 5/26/2023

### Download

[Build 8.1.936.1000](#)

*Note: Please email [ticket@adaptiva.com](mailto:ticket@adaptiva.com), or open a ticket from the support portal, to receive the password to extract the ZIP file.*

### Client

- ▀ Reading correct configuration for best interface target to use for determining local IP address for communication over relays

## Build 8.1.936.0

Early Adopter Release Date: 5/18/2023

### Download

[Build 8.1.936.0](#)

*Note: Please email [ticket@adaptiva.com](mailto:ticket@adaptiva.com), or open a ticket from the support portal, to receive the password to extract the ZIP file.*

### General

- ▀ Permissions: Added CPD for data providers, enabling the ability to specify permissions
- ▀ Security: Enabled direct parsing of Adaptiva messages
- ▀ Content: Reduced availability threshold to 5 from 10 for contents
- ▀ In ServiceWindowConstraintsApplier, fixed infinite recursion bug
- ▀ Latest JRE integrated: 8.372.07.1
- ▀ Latest Nginx integrated: 1.24.0
- ▀ Latest Tomcat 9 integrated: 9.0.60

### Server

- ▀ Always close REST API HTTPClient in case of exception
- ▀ REST API will use the configured socket timeout in waiting for response
- ▀ UUP: ByteLevel publication was not working for files larger than 4GB
- ▀ Security: Do not return SQL queries when exception occurs
- ▀ Lowered customer server relay assignment retry interval to 1 minute, in case of API failure

### Client



- ▀ Security: Added support for strong per client H2 user and password
- ▀ Security: Strong input validations and DACL in drivers
- ▀ Added AdaptivaApiFoundryDotNet.dll to client x64
- ▀ Always set CDN preference to true for central office clients and correctly use CDN timeout on server for central office clients
- ▀ Store office id, office client count information in client registry whenever it changes
- ▀ UUP: ByteLevel content download was failing for file path because of case sensitivity
- ▀ UUP: Multiple files in the same file manifest ACP requests were not handled properly

### *Endpoint Health*

- ▀ EPH policy false updates are stopped
- ▀ Allow ability to add checks from one EPH policy to other policy in web UI

### *OneSite*

- ▀ For SCCM content library always get location from SQL and try to use even when network shares are inaccessible

## Build 8.1.935.7

Early Adopter Release Date: 2/17/2023

General Availability Release Date: 3/6/2023

### *Download*

[Build 8.1.935.7](#)

*Note: Please email [ticket@adaptiva.com](mailto:ticket@adaptiva.com), or open a ticket from the support portal, to receive the password to extract the ZIP file.*

### *General*

- ▀ IP2P protocol was not handling other IP2P for content elections
- ▀ Added auto correction for content receipts in-memory state, when inconsistency state is detected
- ▀ Allow debug/trace logs in components and workflows

### *Server*

- ▀ Ignore byte level publication of encrypted content and log proper error
- ▀ Improvements to REST API security
- ▀ Fixed certain OneSite reports broken because of extra columns in content receipts
- ▀ Updated Client Auto Upgrade workflow to correctly support installation starting in the future
- ▀ Updated JRE to: 8.362.08.1
- ▀ License consistency in target collections for OneSiteC and OneSite

### *Client*

- ▀ Client P2P Installer MSI: Changed client mem to 128 by default
- ▀ Added 4 Programs in support of Internet-based clients, InstallorUpgrade and CleanInstall both of ServerGUID and cloud relay parameters

- ▀ Set upload\_receipts\_to\_common\_table to false by default
- ▀ Log and ignore proxy parsing errors in case configuration cannot be read
- ▀ Updated Cache Driver with new Certificate signing

## Build 8.1.935.6

Release Date: 12/2/2022

### Download

#### [Build 8.1.935.6](#)

*Note: Please email [ticket@adaptiva.com](mailto:ticket@adaptiva.com), or open a ticket from the support portal, to receive the password to extract the ZIP file.*

### General

- ▀ JRE updated to: 8.352.08.1
- ▀ Re-compiled binaries that were effected by JVM memory bug

### Server

- ▀ Nginx updated to: 1.22.1
- ▀ Disabled the single content receipts table data population from the current data by default during upgrade
- ▀ Fixed merged client list not populating in Web Portal group editor
- ▀ Fixed wrongly read sequence number as integer instead of long in messaging
- ▀ Removed client receipt cleanup from new client handshake and moved to invalid client handler

### Client

- ▀ Added additional CDN URL masking in logs
- ▀ Workflow metadata properties removed from logging in configuration.log to make the log more readable
- ▀ Fixed memory size calculation issue in service startup
- ▀ IP2P: In case of no actual diff sources, direct client to peers with full content before falling back to CDN
- ▀ IP2P: Minor fix in source compute and added logging

### Endpoint Health

- ▀ Updates to SQL stored procedures to record dates based on server time zone to prevent future dates in the database

## Build 8.1.935.5

Release Date: 10/17/2022

### *Download*

[Build 8.1.935.5](#)

*Note: Please email [ticket@adaptiva.com](mailto:ticket@adaptiva.com), or open a ticket from the support portal, to receive the password to extract the ZIP file.*

### *Server*

- ▲ Implemented fix to not attempt to auto-recover the port open failures
- ▲ Single table for content receipts created, named Content\_Receipts
- ▲ Additional details stored in content receipt tables for source type, source ID, and source IP (if applicable)

### *Client*

- ▲ Fixed an HTTP failure that was wrongly determined in CDN download
- ▲ Changes to ensure that STP re-computes the correct protocol on network location changes
- ▲ Changes made to handle missed policy after assignment callback in case client restarts while policy was waiting for assignment workflow to finish
- ▲ Stop reading event logs if time constraints are specified after time is outside the min time and max time constraints

### *Endpoint Health*

- ▲ Fixed stored procedure to handle future datetime reported by endpoints with wrong datetime configured

### *Platform*

- ▲ Additional URL masking in logs
- ▲ New code-signing certificate used to sign all components
- ▲ Improved support for Global Protect and similar VPN technologies
- ▲ Updated MS graph jars in workbench plugin

## Build 8.1.935.4

Release Date: 9/1/2022

### Download

[Build 8.1.935.4](#)

*Note: Please email [ticket@adaptiva.com](mailto:ticket@adaptiva.com), or open a ticket from the support portal, to receive the password to extract the ZIP file.*

### Server

- ▲ Enhancement: JRE updated to 8.0.342.07
- ▲ Enhancement: Nginx updated to 1.22.0
- ▲ Fix: Issues with creation of built-in policies 410 and 411 on upgrade from pre 8 versions

## Build 8.1.935.3

Release Date: 7/6/2022

### Download

[Build 8.1.935.3](#)

*Note: Please email [ticket@adaptiva.com](mailto:ticket@adaptiva.com), or open a ticket from the support portal, to receive the password to extract the ZIP file.*

### Server

- ▲ Fix: Allow Intune file generation with names containing periods
- ▲ Fix: Validate Intune app name is a valid file name
- ▲ Fix: Byte level publication issue where server returns publication in progress
- ▲ Fix: Generic SQL upload logging fix
- ▲ Fix: Reduced wrapped messaging to internet offices on content updates and deletions
- ▲ Fix: Optimized content deletion messaging for byte level contents. eg Office 365
- ▲ Fix: Restored: pickup logging xml changes automatically without restarting
- ▲ Fix: Crash fix in ping system API because of relayed ping failures. Very rare occurrence
- ▲ Fix: Support for detection of all products ever enabled
- ▲ Fix: Issue where 404 server error on getCustomEditors freezes
- ▲ Fix: Batching support in grouping client table update during setup

### Client

- ▲ Fix: Byte level download, check for attachment presence on client
- ▲ Fix: Use cached relay info on client to avoid operations manager REST call
- ▲ Fix: Incremented ping attempt duration to 3 minutes for internet clients. Also added control configurations
- ▲ Fix: Handle the case where wrapped messages were sent to itself while protocol state was not correct. This was causing heavy CPU utilization

- ▲ Fix: In LoggingManager.getLogFileName, filter characters not allowed in windows file names
- ▲ Fix: Apply logger.no\_logging to workflow logs

## Endpoint Health

- ▲ Fix: EPHDataClean stored procedure fixes
- ▲ Fix: EPH roles and permissions enforced in UI and new backend policies

## OneSite

- ▲ Fix: Added content push data provider OneSite
- ▲ Fix: Content Push Save-as in Web UI
- ▲ Fix: Added provisioning mode check to ContentPushClient
- ▲ Fix: Content download dashboards were not using property macro correctly
- ▲ Fix: P2P PXE: Allow for setting sccm sql port for remote servers
- ▲ Fix: OneSite DB 25 fixed for type sitecode macro

## Build 8.1.935.1

Release Date: 5/2/2022

## Download

[Build 8.1.935.1](#)

*Note: Please email [ticket@adaptiva.com](mailto:ticket@adaptiva.com), or open a ticket from the support portal, to receive the password to extract the ZIP file.*

## Server

- ▲ Fix: Group/Collection explorer have support for show all button
- ▲ Fix: Correct API is used for combining test and production relays in Heartbeat check
- ▲ Fix: Added check in windows service before force stopping web UI processes

## Client

- ▲ Fix: H2 database, NULL column handling in client policies table on client
- ▲ Fix: H2 database, values were being overwritten by policy after installation
- ▲ Fix: ByteLevelMetadata download error is properly caught and propagated
- ▲ Fix: Set send deployment status false for built in settings policies for deployed objects and blobs
- ▲ Fix: Handled complex rule removal from the registered rule, this could have led to retained memory in long running client
- ▲ Fix: Updated transport drivers after crashes were identified
- ▲ Fix: Check for offline relays and not add them to test relays
- ▲

## Endpoint Health

- ▲ Fix: an issue in Health Check Editor where erroneous forms did not prevent save

## Build 8.1.935

Release Date: 4/5/2022

### Download

#### [Build 8.1.935](#)

*Note: Please email [ticket@adaptiva.com](mailto:ticket@adaptiva.com), or open a ticket from the support portal, to receive the password to extract the ZIP file.*

### Enhancements

- ▀ Reduced load from Internet clients
- ▀ Update Java to latest release: 8.322.06.1
- ▀ Updated cache driver

### Fixes

- ▀ SCCM Application and Software Updates had disabled publication-related menu items in their browser component tables
- ▀ Blob read issue because of amount of memory 32 bit Adaptiva client can allocate
- ▀ Clicking on a UI-generated "fake" class root folder created an invalid parent folder ID on subsequently generated objects from that view
- ▀ Missing EPH workflow supporting both EPH and EVM added again
- ▀ EPH upload stored procedure checks for deleted policy and skips the upload
- ▀ Missing EPH SQL indexes
- ▀ Location editor IP Range UI could not create new range after manual UI build
- ▀ ByteLevel download Office365: always notify SCCM even when progress is less than chunk size
- ▀ H2 migration: missing space was causing upgrade failure
- ▀ Deadlock: InternetClient communication deadlock in Internet NTM for new client requests
- ▀ Canceled by Adaptiva admin was missing from DP Fallback setting in system configuration
- ▀ Performance issues with query for Blindspots card on EVM dashboard
- ▀ Client content push policy was missing the setting for allow IntelliStage when on Internet
- ▀ Issues with object editor changed state detection in Endpoint Health Checks and Policies
- ▀ Server was returning requesting client ID during content request from Internet clients
- ▀ ConfigMgr and Intune display names for packages and apps were inconsistent
- ▀ Run Now button was converting scheduled policies to instant
- ▀ Azure URL check was using hardcoded values, modified to use configured values, if any
- ▀ SQLResultProcessor node was not handling SQL queries with DECLARE statements
- ▀ OneSite Cloud Edition has been renamed to OneSite ConfigMgr Edition
- ▀ OneSite has been renamed to OneSite Legacy
- ▀ Top level navigation changed to OneSite Anywhere in the web portal
- ▀ Blob allocation fix and blob deletion file existence check
- ▀ Updating "Push content only if disk space available" did not increment the policy version
- ▀ H2 Migration issues for 5.6 client to 8.1

## Build 8.1.934.100

Early Adopter Release Date: 2/1/2022

### Download

[Build 8.1.934.100](#)

*Note: Please email [ticket@adaptiva.com](mailto:ticket@adaptiva.com), or open a ticket from the support portal, to receive the password to extract the ZIP file.*

### Enhancement

- ▲ Log4j has been upgraded to version 2.17.1
- ▲ Log file name format has changed. New format is **name#.log** Previously, when a log file rolled over, the number would be appended to the end of the filename which meant that the file no longer had the .log extension. Now files will open in default log file viewer.

---

*NOTE: The error log will still be **adaptiva.err** and the rollover files will follow the new format of **Adaptiva#.err***

*NOTE: Workflow log file size can no longer be changed in the workbench. All log files now have a maximum size of 10MB.*

---

## Build 8.1.934

Release Date: 1/17/2022

### Download

[Build 8.1.934](#)

*Note: Please email [ticket@adaptiva.com](mailto:ticket@adaptiva.com), or open a ticket from the support portal, to receive the password to extract the ZIP file.*

This release includes everything from **Build 8.1.933** which was released to Early Adopters. This build fixes the issues that were discovered during this Early Adopter phase.

### Fixes

- ▲ Problem where the Client Auto-Upgrade dashboard was displaying strangely for some users
- ▲ Issue where Client Health Policies were displaying with an asterisk stating that there were changes to be saved even though no changes had been made
- ▲ Issue where other subnets in the same office were not being queried for content even though they had the content available

- Problem where Direct Member Groups were losing existing members when being edited

## Build 8.1.933.1

Early Adopter Release Date: 1/5/2022

### Download

[Build 8.1.933.1](#)

*Note: Please email [ticket@adaptiva.com](mailto:ticket@adaptiva.com), or open a ticket from the support portal, to receive the password to extract the ZIP file.*

### Fix

- Backward Compatibility issue with TLS settings

## Build 8.1.933

Early Adopter Release Date: 12/21/2021

### Download

[Build 8.1.933](#)

*Note: Please email [ticket@adaptiva.com](mailto:ticket@adaptiva.com), or open a ticket from the support portal, to receive the password to extract the ZIP file.*

### New

- Evolve VM (Vulnerability Management), Adaptiva's newest addition to the product lineup. This product allows you to scan for known vulnerabilities in your environment based off the CVE listings in the National Vulnerability Database from the National Institute of Standards and Technology (NIST).
- Updated Licensing UI with support for SKU-based, product combinations
- Office/Microsoft 365 patches download support using byte-level, peer-to-peer chunking
  - Onesite.use\_byte\_level\_p2p\_for\_o365
  - Default: false
- Support for Proxy Servers
  - PAC file support for Windows Proxy Servers
  - Lookup and load all available proxies to use and try. Proxy look and load order is:
    - Custom proxy and custom PAC URL
    - Current logged on user's IE settings
    - Current logged on user's winHTTP settings
    - Local machine's IE settings (both 32/64-bit)
    - Local machine's winHTTP settings (both 32/64-bit)



- Added custom proxy and custom PAC file options to Client setup command line switches. These settings only apply when the client is not already installed. Upgrading the client will not overwrite the values present in the client registry.
  - -customproxy <server>:<port>:<scheme> [i.e. -customproxy 127.0.0.1:9000:http]
  - -customproxybypass <server1>;<server2>;<server3>
  - -preferuserproxy <true>|<false>
  - -custompacurl <URL of PAC file>
- Preserve custom proxy settings during client reset/reactivation
- ▲ OneSite Intune:
  - Proxy integration while connection to Microsoft Graph APIs
  - Support for specifying application scope tags for Intune applications
- ▲ Support for specifying method and order for finding public IP of an endpoint
  - networking.public\_ip\_methods
  - Default: opendns,adaptiva
- ▲ Increased security by adding password encryption for Adaptiva Native Login both on Adaptiva Server and Web Portal

## Enhancements

- ▲ Updated dashboard engine to remove long-polling data requests with a notification-based, on-push strategy
- ▲ Performance improvements to Web Portal HTTP Request management
- ▲ Updated nginx to version 1.20.1
- ▲ Updated JRE to version 8.302.08.1 for both client and server
- ▲ Updated Endpoint Health data upload batch from 1 to 100
- ▲ Updated default data upload batch processing time from 30 seconds to 500 milliseconds
- ▲ Security updated by removing the socketappender.class from Log4j and defaulting to TLS 1.2
- ▲ Created a separate queue for IP geolocation information from the clients
- ▲ Increased HTTP client connect timeout from 30 seconds to 60 seconds
- ▲ Added a "drag handle" to object browser tables to allow rows to be dragged into folders, while still allowing users to highlight and copy text from the row

## Fixes

- ▲ AdaptivaClient H2 database migration issue resolved by adding check for table existence before getting data for migration
- ▲ Endpoint Health, if workflow is missing but remediation is requested or forced, now auto correct the policy on save
- ▲ Control setting for handling office mismatch when a content location request is received on server
- ▲ Client is instructed to re-fetch office information when mismatch is detected
- ▲ Created separate pools for incoming GET response processing and packet decoding
- ▲ Updated picking of correct cloud content settings for Intune P2P Applications
- ▲ Fixes for random client auth failures because of the hash recalculations
- ▲ Fixed problem with ClientSettingPolicy incorrectly setting system property when policy priority was updated
- ▲ Added ability to dump heap through the "slm.dumpheap" config property. Heap dump file will be located in the server's temp file with the name: {guid}.hprof
- ▲ Issue with IP geolocation data upload fixed

- ▲ Client setup always expected password in lower case
- ▲ Fixed an issue where having too many Web UI tabs open at once caused an infinite loop when one of them requested authentication logout

## Build 8.1.931.6

Release Date: 10/13/2021

### Download

[Build 8.1.931.6](#)

*Note: Please email [ticket@adaptiva.com](mailto:ticket@adaptiva.com), or open a ticket from the support portal, to receive the password to extract the ZIP file.*

### Added

- ▲ Web Portal support for OneSite for VMWare
- ▲ LiveFlow display in the Web Portal for OneSite for VMWare
- ▲ Dashboards for OneSite for VMWare

### Fixes

- ▲ AdaptivaClient H2 database migration issue fixes due to manifest issues

## Build 8.1.931.5

Release Date: 9/30/2021

### Download

[Build 8.1.931.5](#)

*Note: Please email [ticket@adaptiva.com](mailto:ticket@adaptiva.com), or open a ticket from the support portal, to receive the password to extract the ZIP file.*

### Changes

- ▲ Location-Client information loading on AdaptivaServer service startup has been optimized for better performance

### Fixes

- ▲ UXM module compatibility issue resolved
- ▲ Issues with updating the client from older versions due to the new H2 database have been resolved.
- ▲ Generic uploader checks for invalid client during batch processing

## Build 8.1.931.1

Release Date: 8/18/2021

### *Download*

[Build 8.1.931.1](#)

*Note: Please email [ticket@adaptiva.com](mailto:ticket@adaptiva.com), or open a ticket from the support portal, to receive the password to extract the ZIP file.*

### *Fixes*

- An issue where the Adaptiva client was not responding to invocations from ConfigMgr. Depending on Adaptiva Fallback settings, this could cause a failure to download or cause a rollback to Distribution Points to acquire content, which is likely undesirable.

## Build 8.1.931

EA Release Date: 6/22/2021 (Build 8.1.930)

Release Date: 8/5/2021

### *Download*

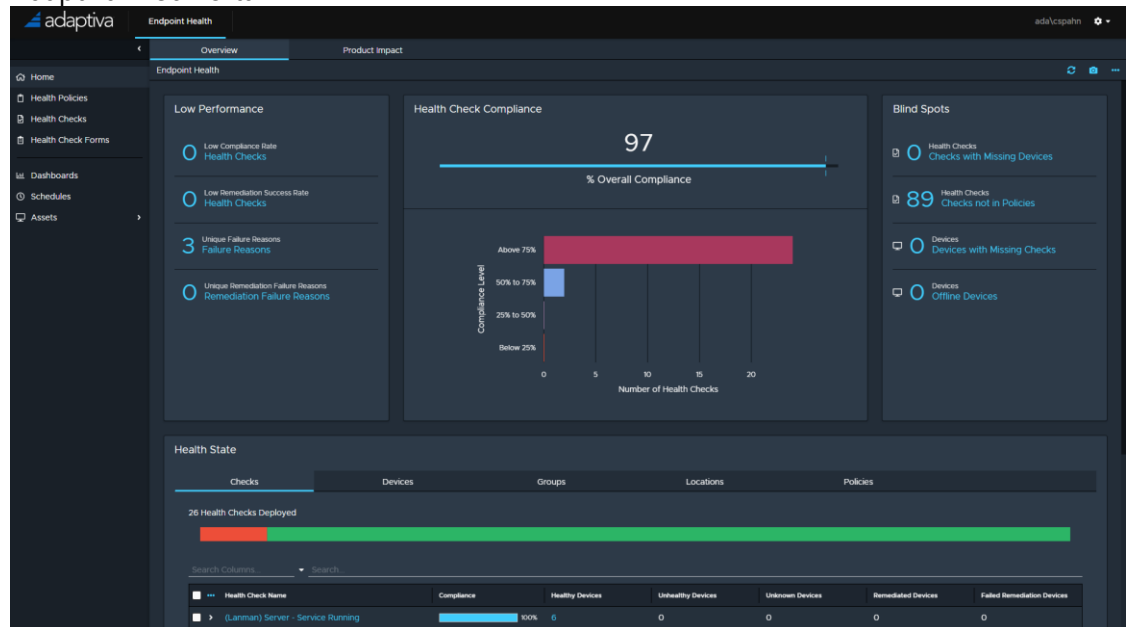
[Build 8.1.931](#)

*Note: Please email [ticket@adaptiva.com](mailto:ticket@adaptiva.com), or open a ticket from the support portal, to receive the password to extract the ZIP file.*

### *New!!*

- Endpoint Health is now CLOUD ENABLED!  
Version 8.1 adds Endpoint Health to the Adaptiva cloud platform – Enable communication & policy distribution to Windows endpoints anywhere, bringing with it a host of features in addition to the previous version of Endpoint Health, including:
  - Seamless integration with Adaptiva Cloud services  
This enables Adaptiva communication via the Adaptiva Cloud Relay services, providing the ability for clients to communicate, function and download content on any type of internet connection.

○ Adaptiva Web Portal



A brand new web user interface for administration of Adaptiva, providing an intuitive, faster, web browser experience. This includes:

- Pre-built, sharable dashboards that provide instant visibility as well as historical data into the health, security, and compliance of all endpoints.
- Integrated Dashboard Engine
- Management and Configuration of
  - Assets (Devices, Groups and Locations/Offices)
  - Product License Management
  - Client Settings Policies
  - Schedules
  - Client Auto Upgrade
  - Client Authorization (to secure off-site client installations)
  - Server Activation
  - Customizable Themes
- UX Designer for Custom Dashboards
- Additional health checks are now available in the new version of Endpoint Health as directed and requested from extensive customer advisory and experience feedback. These include:
  - Windows 11 Readiness
  - User Account Running Services
  - Adaptiva Client Not Integrated with ConfigMgr
  - Data Execution Prevention (DEP) Policy
  - Registry Setting Must Exist
  - ConfigMgr Client Actions Must be Present
  - Windows 10 - Domain Trust (no remediation)
  - Windows 10 Store Apps
  - Tanium Client Settings

 Upgraded to H2 database on the client side for significant stability, performance, and efficiency gains.

- Web Portal now ships as a pre-built app which allows access to the Portal immediately after an installation or upgrade rather than waiting for screens to be built.

### *Fixes*

- An issue with handling DP Bypass for downloads cancelled by Admin was resolved.
- Added a workaround for handling certain failures that were related to cloud storage in the Australia region.
- Time constraints can be added or edited in existing schedules with constraints.
- Updated some health checks to fully support Windows 10

## Build 8.0.928.3

Release Date: 09/08/2021

### *Download*

[Build 8.0.928.3](#)

*Note: Please email [ticket@adaptiva.com](mailto:ticket@adaptiva.com), or open a ticket from the support portal, to receive the password to extract the ZIP file.*

### *Fixes*

- Persist last client communication time in single transaction during service stop.
- Resolved issue causing Internet P2P client deadlock
- Null pointer error in content push policy processing causing Adaptiva notifications processing getting blocked
- Added retry of content publication to CDN
- Client IP change detection logic enhanced
- Correct handling of DOWNLOAD\_CANCELLED\_BY\_ADAPTIVA\_ADMIN for OneSite jobs from SCCM

## Build 8.0.928.2

EA Release Date: 5/6/2021

Release Date: 6/1/2021

### Download

#### [Build 8.0.928.2](#)

*Note: Please email [ticket@adaptiva.com](mailto:ticket@adaptiva.com), or open a ticket from the support portal, to receive the password to extract the ZIP file.*

### New!!

- ▲ LiveFlow UI – The LiveFlow tool is now in the Web Portal providing users with the ability to visualize WAN and Internet transfers, as well as the capability to pause, change priority, and even change transport protocol.
- ▲ Added ability to generate HTTPS based URLs for Adaptiva CDN downloads.
  - Please Note: This requires all clients to be running the updated 8.0.928 client or above.
  - Contact Adaptiva Support to enable HTTPS on your Adaptiva CDN.
- ▲ Added support for creation of Internet Offices based on the combination of subnet address and public IP address. (Default is there is an Internet Office for all clients behind the same Public IP address)
  - To enable this feature, the following Adaptiva Server registry configuration needs to be set to **true**:
    - `networking.create_subnet_based_internet_offices` (default: false)
- ▲ Folder-based name search for tree explorers within the Web Portal has been added.
- ▲ Extended Amazon S3 region support to Cape Town, Milan, Hong Kong, and Bahrain for Adaptiva CDN.
- ▲ Updated JRE to 1.8.0\_282 in both server and client.
- ▲ Added capability for creating a silent install option for the Adaptiva Server using an Answer File.
- ▲ Support for automatic NAT detection based on the client's local IP address being different to the receiving address. With this set, if a client is detected behind a NAT it will work in Internet mode only.
  - To enable this feature, the following Adaptiva Server registry configuration needs to be set to **true**:
    - `networking.enable_nat_detection` (default: false)

### Fixes & Enhancements

- ▲ Auto Offices were being incorrectly generated for Internet connecting clients.
- ▲ Enabled detection of the ZScaler ZPA tunnel being active, even when local IP does not change, for correct network location detection when using ZScaler ZPA.
- ▲ Previously clients in a VPN office, enabled for Direct CDN Download (Split Tunnel mode), would not provide content to other internet clients.
- ▲ Changes added to optimize and ensure ability to pause and override priority in Internet Peer-to-Peer (iP2P) transfers.
- ▲ Intune SDKs have been updated following recent changes.
- ▲ Mitigated issue where deadlock would occur under load in Adaptiva Server HTTP transport.

- Added enhancement to check if AdaptivaClient.exe is already running in service startup, and to terminate it.
- Fixed an issue with the Internet managed offices to prevent deadlock when buffers are full.
- HTTP sending transport has been updated to prevent deadlock issue when buffers are full.
- ListServer function has been updated to prevent deadlock issue in notifications.
- Updated SQL table column schema for IPGeolocation data following truncation issues on insert.
- Fixed an issue with Intune access token returning a validation error.
- Improvements to CPU condition on VPN clients when Content Location Request (CLR) is not due.
- Changed SQL connection timeout to 360ms for the ConfigMgr database.
- Removed an extra semicolon in the system path variable which was being added by client setup.
- SQL Express will no longer be downloaded during server setup if the executable for SQL Express 2014 (12.0.2000.8) is present locally.
- Removed incorrect references to Endpoint Health in some Web Portal elements.
- Hid ConfigMgr related controls from Web Portal when ConfigMgr is not attached during installation.
- Handle termination of existing Web Portal processes on server upgrade, forcing service stop and start.
- Added missing option to publish unpacked content in Web Portal - Content Push editor.
- Skip 127.0.0.0/24 IP range in Central Office when selecting the best interface for clients connecting to a cloud-based server.

## Build 8.0.926

EA Release Date: 1/15/2021

Release Date: 2/1/2021

### Download

[Build 8.0.926](#)

*Note: Please email [ticket@adaptiva.com](mailto:ticket@adaptiva.com), or open a ticket from the support portal, to receive the password to extract the ZIP file.*

### New!!

- **Adaptiva Content Delivery Network**  
OneSite content can now be stored in the Adaptiva CDN, removing the requirement for Azure Storage to hold their cloud-based content. Adaptive provides every cloud customer with 2TB of storage and 1GB per client of transfer. Azure Storage is still an option, should customers prefer to use it.
- OneSite client now keeps track of the server version and the lowest client version. This will be used for future features.
- Tool added for testing the Internet P2P functionality. InternetP2PTester is in the Tools folder of the distribution media.

## Fixes

- ▲ Updated content prefix when creating Intune P2P apps
- ▲ Fixed issue where same client could be counted multiple times for licensing
- ▲ Updated detection of changes to the best local interface
- ▲ Updated transport driver to address abnormal termination of AdaptivaClient.exe
- ▲ Removed network ping to server during new client install so that Internet-based installations did not get error
- ▲ Added HTTPS support for WebUI
- ▲ Minor updates to the Internet P2P process
- ▲ Updated check for IBCM where *isinternetfacing* DP would make an additional check for registry value to confirm that it starts with DP URL

## Build 8.0.924.2

Release Date: 11/06/2020

## Download

[Build 8.0.924.2](#)

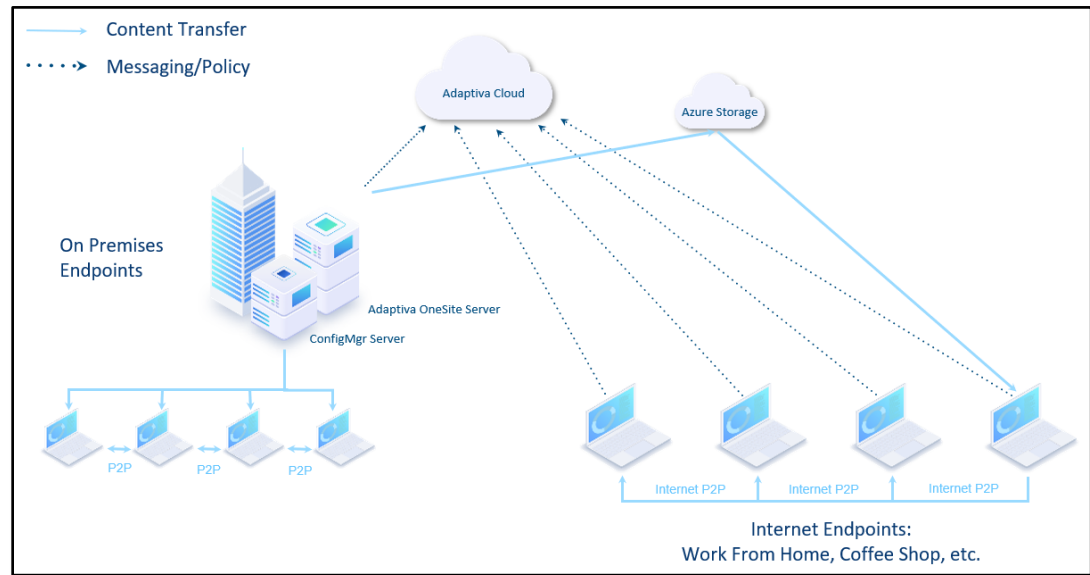
*Note: Please email [ticket@adaptiva.com](mailto:ticket@adaptiva.com), or open a ticket from the support portal, to receive the password to extract the ZIP file.*

## New!!

- ▲ OneSite Cloud \*  
Version 8.0 adds OneSite Cloud product to the platform – Enable communication & content distribution to Windows endpoints anywhere, bringing with it a host of features in addition to the traditional OneSite products, including;
  - Seamless integration to Adaptiva Cloud services  
This enables Adaptiva communication via the Adaptiva Cloud Relay services, giving the ability

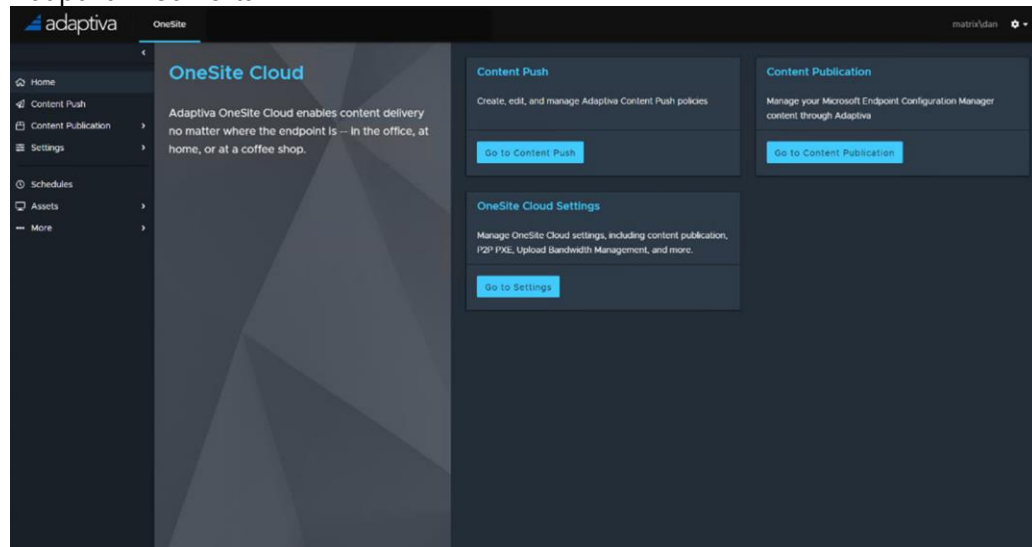


for clients to communicate, function and download content on any type of internet connection



- **Azure Storage Integration**  
Allows automatic publication of ConfigMgr content to an Azure Storage account for internet clients to source content no matter where they are.
- **Internet Peer-to-Peer**  
Adaptiva Clients are able to intelligently source content from other peers that are connected to the Internet, using the Adaptiva Predictive Bandwidth Management technology to transfer the content between peers ensuring the fastest transfer with minimal impact. This allows Internet clients to share content with each other, reducing the number of client downloads required from cloud storage & associate egress costs.
- **IP Geo-location Services**  
Adaptiva Cloud services also provide IP Geo-Location capabilities so that the location of a client on the internet is known based on its public IP information. This is also used for clients to intelligently chose the closest peers to source content from when performing Internet Peer-to-Peer.

○ Adaptiva Web Portal



A new web user interface for administration of Adaptiva, providing an intuitive, faster, web browser experience. This includes

- Integrated Dashboard Engine
- Customizable Themes
- Management and Configuration of
  - Assets (Devices, Groups and Locations/Offices)
  - Product License Management
  - Client Settings
  - Cloud Settings
  - Content Push Policy
  - Content Publication
  - App-V Settings
  - Upload Bandwidth Management
  - Policy Bandwidth Management
  - DP Bypass
  - Virtual SMP
  - P2P PXE
  - Schedules
  - Adaptiva Content
  - InTune P2P Applications
  - and more to come...

*\* Please Note : OneSite Cloud and the additional feature set is a separate licensed product and requires a new license from traditional OneSite.*

- ▲ Direct HTTP – Able to communicate with Adaptiva server using HTTP additionally, enabling support for hosting Adaptiva server off premises.
- ▲ New workflow activity 'AsyncWorkflowExecutor' to support async workflow executions

## Fixes

- ▲ Fix for Server less mode for VMware and Intune content downloads when server is not reachable.
- ▲ Fixed a memory leak on server side in buffer sending using Adaptive transport, which could cause high memory for server running over for long time.
- ▲ Added missed ConfigMgr object types to resync operation.
- ▲ Schedule registrations loading on startup has been made more dynamic.

## Enhancements

- ▲ Support for sending client to server messages in a workflow using specific client to server queue.
- ▲ Improved Proxy Server support for Server & Client
  - Adaptiva Server service will default to and use the WinHTTP system settings for communication to cloud services. Adaptiva Client will prefer User proxy settings. This can be changed on server/client by the following registry key/client setting;
    - http.prefer\_user\_proxy (server default: false, client default: true)
  - Also, proxy settings can be set directly via server/client registry key/client settings:
    - http.custom\_proxy\_port (default: 80)
    - http.custom\_proxy\_scheme (default: http)
    - http.custom\_proxy\_server (default: <blank>)
- ▲ Added support for specifying part of a MAC address and/or interface name filter for binding to a particular IP address for Adaptiva Client. This addresses issues where for certain VPN solutions the interface metric is not configurable or is set to low priority, e.g. NetScaler VPN.
  - This can be changed on the client side by the following client setting/registry key
    - networking.interface\_name\_filter
    - networking.mac\_address\_filter
- ▲ Automatic IP address additions and removals detection on Adaptiva client and re-evaluate best IP for communication with Server.
- ▲ Added support for sending content push status messages for dashboard reporting.
- ▲ Updated code signing certificate.
- ▲ Updated JRE to 1.8.0\_265.

## Build 7.1.903.5

Release Date: 09/08/2021

### *Download*

[Build 7.1.903.5](#)

*Note: Please email [ticket@adaptiva.com](mailto:ticket@adaptiva.com), or open a ticket from the support portal, to receive the password to extract the ZIP file.*

### *Fixes*

- ▲ Resolved null pointer error which was not present in earlier change.
- ▲ Added a check for Evolve Vulnerability Management license in stored procedure for client data cleanup on server

## Build 7.1.903.4

Release Date: 09/07/2021

### *Fixes*

- ▲ Added support for skipping AppV setting lookup for applications during OneSiteRequest processing from clients. Set to false by default, can be set to true if AppV is not in use for applications. Setting name: **onesite.skip\_wmi\_access\_appv\_enabled**

## Build 7.1.903.3

Release Date: 07/28/2021

### *Fixes*

- ▲ Resolved issue with null pointer error in content push policy processing causing Adaptiva notifications processing getting blocked

## Build 7.1.903.2

Release Date: 06/30/2021

### *Fixes*

- ▲ Client SQL definition file missing column mapping for one of the tables for GreenPlanet product.
- ▲ Adaptive transport driver after fixing intolerance initialization issue. This was causing occasional slow LAN transfers which would not recover automatically.
- ▲ Correct handling of DOWNLOAD\_CANCELLED\_BY\_ADAPTIVA\_ADMIN for OneSite jobs from SCCM
- ▲ License counting was done incorrectly in case of multiple collections.
- ▲ In new client registration a rare case of server deadlock between client manager and network topology manager

- ▀ Routine checking of local IP check against current list of IP addresses.
- ▀ Deadlock by an incorrect logging line.

## Build 7.1.903.1

Release Date: 11/3/2020

### *New!!*

- ▀ Support for automatic new IP removal or detection.
- ▀ Support for specifying MAC name filter
- ▀ New code signing certificate

### *Fixes*

- ▀ Faster loading of schedule registrations on server startup.

## Build 7.1.903

Release Date: 06/01/20

### *Download*

[Build 7.1.903](#)

*Note: Please email [ticket@adaptiva.com](mailto:ticket@adaptiva.com), or open a ticket from the support portal, to receive the password to extract the ZIP file.*

### *New!!*

- ▀ AAT-GUI.ps1 – A new Adaptiva Administration Tool with full GUI. All the same functionality without having to figure out the switches.

## Build 7.1.902

Early Adopter's Release Date: 05/18/20

### *Download*

[Build 7.1.902](#)

*Note: Please email [ticket@adaptiva.com](mailto:ticket@adaptiva.com), or open a ticket from the support portal, to receive the password to extract the ZIP file.*

### *New!!*

- ▀ OneSite for Intune v1

## Fixes

- ▲ Regsvr.exe is used instead of just regsvr when registering DLLs
- ▲ Error handling on UDP transport for 0-byte packets received
- ▲ Fixed error code being returned from decryption failure
- ▲ Fixed memory leak in sortPermissionsAccordingToPrecedenceRules()
- ▲ Fixed issue with not deleting group edited threads in Adaptiva SQL under certain conditions
- ▲ OneSiteDownloader now creates empty folders when copying unpacked files from local machine

## Enhancements

- ▲ LiveFlow shows the transport type
- ▲ Remote uploads to VPN clients are visible in LiveFlow now.
- ▲ Configurable wait after IP address notification is received. Default 30 seconds
- ▲ Updated large UDP V2 defaults
- ▲ Updated JRE to 8.242.08.1
- ▲ PXE approval workflow on RVP client
- ▲ Echoed option 82 in DHCP offer and DHCP ack under a flag
- ▲ SQL workflow activity usability enhancements
- ▲ All clients group is not auto added when license is enabled for first time. User will need to target one or more target groups in licensing UI explicitly [NOTE: This must be done to enable new environments]
- ▲ Unlock locked administrators from UI
- ▲ Client Health has been renamed to Endpoint Health
- ▲ IBCM wild card support. New property has been introduced. `onsite.ibcm_settings_dp_names_user_defined`
- ▲ Removed AJP connector configuration from server. Vul: CVE-2020-1938
- ▲ Settings for specifying parent and office type for auto offices
- ▲ Send push volunteer cancel when a session is rolled back

## Build 7.0.855

Early Adopter's Release Date: January 15, 2020

## Download

### [Build 7.0.855](#)

*Note: Please email [ticket@adaptiva.com](mailto:ticket@adaptiva.com), or open a ticket from the support portal, to receive the password to extract the ZIP file.*

## Fixes

- ▲ Server Installer revised to properly display SQL Settings

- In some cases, deleting an office would not remove any existing pauses or overrides in LiveFlow for that office
- Session ID is now regenerated in case of conflict with signature in LargeUDPV2
- Handled issue leading to creation of multiple OneSiteClient executables appearing after some windows server update
- Incremented receiving buffer size to 10k by default, to handle the Office 365 issue where message was exceeding old limit of 5k.

## Enhancements

- Included the Adaptiva Administration Tool (AAT) to the distribution
- DHCP Option 43 is now supported
- Support for application deployment types based on installation type
- Updated JRE to 8.0.232.09.1
- Updated product guides
- Improved AutoUpgrade workflow:
  - Modified the pre-download workflow to use slm.version setting rather than uninstall key
  - Removed the recurrence schedule from the content push policy schedule
  - Added a 12-hour membership re-evaluation to the group when **All Adaptiva Clients** is selected
- Updated health check **System Up Time** to use WMI, enabling support for all operating systems

## Build 7.0.854

Early Adopters' Release Date: October 15, 2019

General Availability Release Date: November 12, 2019

## Download

### [Build 7.0.854](#)

*Note: Please email [ticket@adaptiva.com](mailto:ticket@adaptiva.com), or open a ticket from the support portal, to receive the password to extract the ZIP file.*

## Fixes

- Discovered a rare occurrence where a race condition existed in processing new client responses from Server during handshake.
- Discovered a rare occurrence where a deadlock between user requesting priority overrides and a call for OM access.
- Previous fix for merging SCCM collection update notifications now available on CAS as well as Primaries.
- In 5.6 clients, the sccm\_connected value default was set to *false*; this caused a problem with ACP invocations if the clients had not gotten the server policy setting to set this to true. The default has now been set to *true* to prevent ACP invocation issues in these scenarios.

- With the added account security features in 5.6, it was seen that sometimes upgrades could fail if the Super Admin account used was locked out due to inactivity. A fix has been added to the server installation routine that it will unlock the Super Admin account when run.
- Fixed minor memory leak that was occurring in client communications with server.
- Fixed rare occurrence of messages being received out of order in bulk messaging.
- Fixed UI issues in Adaptiva Content Publication perspective.
- Scheduler: It was observed that sometimes a schedule would not fire at correct time when load leveling was in use. A fix has been added to address this issue.
- Installer no longer clears entries after Adaptiva value the Path variable when using -CleanInstall.

## Enhancements

- Extend client reset to allow up to 3 tries for a hash validation.
- Improved Large UDP and included as Large UDPv2
- In order to mitigate the possibility of RVP communication causing ARP storms, an internal method of caching and handling ARP's has been developed within the Adaptiva Client. This new method is enabled as default and can be enabled/disabled.
  - Client Configuration: `p2p.create_arp_entries_on_rvp`
- Added the option to change the driver behavior from ASYNC to SYNC for LAN (foreground) adaptive transport.
- Increased the object cache default limit to 5000, to improve Workbench performance managing objects.
- Removed requirement for object manager lookup in PXE processing to avoid any local delays impacting PXE.
- You can configure a client-side configuration which instructs the client to use the Background Protocol for LAN transfers.
  - Client Configuration: `contentsystem.use_wan_transport_for_lan`
- Lowered the default time before the Adaptiva Client service restarts on resume from hibernate/sleep. Old default wait time: 30 seconds, new default wait time: 3 seconds.
  - Client Configuration: `slm.wait_in_seconds_after_resume_from_sleep`
- SCCM Collection update notifications are now merged for the same collection ID, removing unnecessary duplication of notification entries made for SCCM Collection updates.
- Active WAN downloads of a differential file will now be cancelled if a client with the full content comes online in the same Office, and full content will then be downloaded from the local peer.
- An additional check has been added to OneSiteDownloader for concluding if it is running in a Task Sequence.
- Improvements made to the Adaptiva Client Auto Update workflow, so that it retrieves the Server Name automatically from the server to which the Workbench is connected. Also, additional checks and confirmation have been added to the UI form.

## New Features

- Added "OneSite for VMWare Edition" product to the platform.
- New installer to support multiple integration options.
- OneSite for SCCM can now use SQL Server Express Edition if desired.



- ▲ OneSiteDownloader now will automatically attempt to use local installed client for unpacked content before starting P2P discovery. If unpacked content is present in the local Adaptiva Clients cache folder, it will use and copy this local content without the need of P2P discovery. Please Note; Local client must be running at least 7.0.x version, and the content must already be unpacked by the local client.
- ▲ You can now configure specified Client Workflows to be used pre (before) and post (after) a ConfigMgr ACP job is processed. This provides capability to add further automation/customizations for ConfigMgr ACP invocations. 2 initial default workflows are provided but are not enabled/configured as default. These can be configured per client, you can configure the Pre and Post workflow to use per client, using the following system configuration properties.
  - Client Configuration: `onesite.acp_pre_download_workflow`
  - Client Configuration: `onesite.acp_post_download_workflow`

## Build 5.6.815

General Availability Date: July 2, 2019

### Download

[Build 5.6.815](#)

*Note: Please email [ticket@adaptiva.com](mailto:ticket@adaptiva.com), or open a ticket from the support portal, to receive the password to extract the ZIP file.*

### Fixes

- ▲ Fixed minor memory leak that was occurring in client communications with server
- ▲ Fixed rare occurrence of messages being received out of order in bulk messaging
- ▲ Fixed UI issues in Adaptiva Content Publication perspective

### Enhancements

- ▲ Updated installation guide with update SQL permission requirements

## Build 5.6.814

Pre-Release Date: May 16, 2019

General Availability Date: June 2, 2019

### Download

[Build 5.6.814](#)

*Note: Please contact [ticket@adaptiva.com](mailto:ticket@adaptiva.com) or open a ticket from the support portal to receive the password to unpack the ZIP file.*

## Fixes

- ▲ Null pointer error in object order corrector component (Upgrade 5.6 issue rare occurrence)
- ▲ Server upgrade was failing in some instances if global roaming was not enabled. (Upgrade 5.6 issue rare occurrence)
- ▲ AdaptivaP2PClientInstaller.exe is used internally by P2P MSI and was being flagged by Windows defender ATP. The executable is now digitally signed which solves the issue
- ▲ Digitally signed the API foundry DLLs
- ▲ 5.6 workbench installer was not clearing user state from 5.5. (Schema changes necessitate Workbench User State cleanup)
- ▲ Minor UI fixes
- ▲ Added endless retries for SQL connection during server startup (This resolves issue with connection to SQL when SQL is restarting)
- ▲ AD group member sync issues for Adaptiva roles. (Fixes short/long name issues)
- ▲ Repaired the ability to create empty offices
- ▲ Added ability to prevent volunteering for direct push policies so that a single machine in an office can be targeted
- ▲ Updated some OneSite Dashboards

## Build 5.6.812.1

Release Date: March 1, 2019

### Download

#### [Build 5.6.812.1](#)

*Note: Please contact [ticket@adaptiva.com](mailto:ticket@adaptiva.com) or open a ticket from the support portal to receive the password to unpack the ZIP file.*

## Fixes

- ▲ Auto upgrade client workflow + form now displays correctly
- ▲ AdaptivaContentPublication: checks for validating if content ID is already in used
- ▲ Add new workflow activity to calculate file hash
- ▲ Fixed error in URL parsing in HTTPDownload activity
- ▲ WiFi messaging updated to send urgent updates to clients

## Build 5.6.812

Pre-Release Date: February 1, 2019

### Download

#### [Build 5.6.812](#)

*Note: Please contact [ticket@adaptiva.com](mailto:ticket@adaptiva.com) or open a ticket from the support portal to receive the password to unpack the ZIP file.*

### New Features

- ▀ New Workflows:
  - **Adaptiva Licensing Alert** to inform you about upcoming license expiration.
  - **Adaptiva Client Auto Upgrade** to easily upgrade all your existing Adaptiva clients to the latest version.
  - **Pre-Download Workflow - SCCM Provisioning Mode Check**, which can be used in content push policies to ensure that these are not triggered on systems being imaged.
- ▀ New Dashboards:
  - OneSite Content Push Size vs. V-SAN Space
- ▀ New Health Checks:
  - Software update metadata version
- ▀ Added ability to have State Transition Protocol run in Background Thread to resolve rare issues where customers experienced high CPU or Disk utilization during hash validation or unpacking content on clients, using configuration `contentsystem.stp_use_background_thread` **Default false**
- ▀ Added support for content hash locking to ensure that concurrent hash checks do not impact CPU utilization, using configuration `contentsystem.use_content_hash_lock` **Default true**
- ▀ Added support for SCCM high availability
- ▀ Added ability to export objects (Workflows, Content Push Policies, etc.) directly to linked servers
- ▀ Support for Adaptiva native content publication, please see *Adaptiva Content Publication Perspective*
- ▀ Any workflow can now be published as a PowerShell Cmdlet and made available to Adaptiva Server or Adaptiva Clients, please see *PowerShell Cmdlets Perspective*

### Optimizations

- ▀ Newly created workflows now have `AutoDeployOnImport` set to **true** by default
- ▀ Adaptiva Client minimum setting for Maximum Memory Heap increased to **64MB**
- ▀ Support in IntelliStage to only push if office has actual space to accommodate a given content
- ▀ Support for nested SCCM task sequences in Content Push policies
- ▀ Instant Client Health policies updated to allow changes to Health Checks before re-running
- ▀ Added support for performing content downloads for priority contents even when no cache drive has space. This will use client temp folder to store the content file(s)
- ▀ Added ability to allow automatic retrying in case of publication error. **Default disabled** Set server registry value, `onesite.publication_request_retry_processing_delay` to turn it on. Unit is milliseconds.
- ▀ Added support for getting members for Global Security Group(s) across domains (Universal groups are still not supported)

- ▲ CAS stored procedure updated to reflect latest changes from SCCM
- ▲ Faster large message sends: Large message (e.g. expedited contents, policy or in general) will be sent using new UDP based protocol, which is faster than current mechanism. Fresh installs have this enabled by default, for existing installations it can be turned on post server **and** client upgrades.
  - Set configuration *messaging.transport\_determination\_size* to **262144**, after upgrade.
- ▲ Extremely faster LAN content transfers due to new asynchronous protocol. [NOTE: WAN (background) transfers may also be switched to newer protocol using client system configuration named: *adaptivaprotocol\async\_background* **Default false**; however, impact has not been validated by Adaptiva for this implementation]
- ▲ Faster policy delivery, using P2P messaging. **Default false**, can be turned on using server registry value *policyserver.use\_bulk\_messaging*

## Security

- ▲ Build contains several changes with respect to security as we have moved to FIPS compliant algorithms for handshake and encryption. Server supports handshake for both old and new clients, but “newly” encrypted contents will be downloaded by “newer” client only.
- ▲ All encryption using AES
- ▲ AES encrypted communications for logins with Adaptiva accounts. For logins with Active Directory accounts, communications are already encrypted using SSPI
- ▲ Passwords for Adaptiva account must now:
  - 10 characters min
  - Must meet strong password requirements
- ▲ Elliptic-curve Diffie–Hellman (ECDH): Changed client-server handshake protocol to ECDH. Also new session keys are AES.
- ▲ Folder level permission support for SCCM collections
- ▲ Drivers now co-signed by Microsoft to support Secure Boot
- ▲ All binaries whether DLL or executable are signed
- ▲ ACLs on installation folders, content cache folders and registry paths set to allow only to Administrators and System account (Applies to fresh install only)

## Fixes

- ▲ Loading correct OS version information
- ▲ Added provisioning mode check to SCCM policy polling workflows
- ▲ Server setup now exits when you select no in SQL logon setting mismatch dialog
- ▲ Wrong auto office creation using new client IP and older subnet mask
- ▲ Generation of unique health check id for manually imported health checks
- ▲ App-V content streaming support restored
- ▲ Special character handling in TCP based content transfers in OneSiteDownloader

## Build 5.5.677.1

Release Date: October 1, 2018

### *Download*

[Build 5.5.677.1](#)

*Note: Please contact [ticket@adaptiva.com](mailto:ticket@adaptiva.com) or open a ticket from the support portal to receive the password to unpack the ZIP file.*

### *Fixes*

**Office 365 Updates** – In CM 1806, Microsoft changed the payload size for Office 365 updates. This caused ACP requests to fail. We have updated our product to adapt to the new Microsoft settings allowing the transfers to be processed correctly. For more details, see [article](#)

## Build 5.5.677

Pre-Release Date: September 14, 2018

### *Download*

[Build 5.5.677](#)

*Note: Please contact [ticket@adaptiva.com](mailto:ticket@adaptiva.com) or open a ticket from the support portal to receive the password to unpack the ZIP file.*

### *Enhancements*

**Support for ConfigMgr Remote Content Library** – ConfigMgr 1806 introduced the ability to move the Content Library to a remote storage location. This is required for the other new feature, high availability. Adaptiva has added support for this configuration.

**New Release Folder Layout** – In order to reduce confusion, Adaptiva has moved all files in the release into 3 folders:

- Documentation
- Installers
- Tools

**New Dashboards and Updated Dashboards** – Adaptiva has created some new dashboards in ConfigMgr and updated existing dashboards to better represent data and improve performance.

**Updated SQL Views** – Adaptiva has updated the views in the database to optimize queries and the dashboards.

**Renamed AutoPush to AutoSync** – Since the feature is responsible for synchronizing changes from the server to clients that have already downloaded content, the feature was renamed to align with its activity

**Optimized Content Discovery** – Changed the default values of *contentsystem.use\_ip\_address* and *p2p\_vs.use\_ip\_address* to TRUE so that name resolution is not required.

**LiveFlow Status Batch Size** – Reduced the LiveFlow status batch size to 40 to keep using smaller messages and made this configurable as well.

### *Fixes*

**Auto Office Creation** – There was an intermittent issue where an automatically generated office could use an old subnet mask and generate the office with an incorrect address range.

**Health Check ID** – Better handling of the generation of unique health check IDs when health checks are manually imported.

**Application Deployment** – Fixed issue where comment on deployment in ConfigMgr was being used as name when publishing.

**Application Virtualization Support** – Fixed an issue in our support of App-V content streaming.

**File Size with OneSiteDownloader** – Fixed a code issue where certain files over 4GB were not reporting size correctly, thus breaking download, when using the new TCP download for OneSiteDownloader in OSD.

## Build 5.5.676.2

Release Date: July 9, 2018

### *Download*

[Build 5.5.676.2](#)

*Note: Please contact [ticket@adaptiva.com](mailto:ticket@adaptiva.com) or open a ticket from the support portal to receive the password to unpack the ZIP file.*

### *Enhancements*

Added a new approval workflow option for the automatic publishing of content. You now have the option of creating a workflow (or modifying the included default, *SCCM Package Publication Approval Workflow*) to control automatic publication of SCCM content based on defined logic. (i.e. you can look for content that includes a certain string, or content that was created after a certain date)

Added setting to enable the skipping of the server binding check when installing the client from the peer-to-peer MSI installer.

- ✦ Some customers experienced issues using the P2P installer where the RVP was not allowing the lookup during client setup when client was being installed with a different server binding.

- ✦ This can be set in System Configuration policy by adding **SystemConfig\P2p msi\Skip server binding check** to a policy and setting it to **TRUE** (default setting is **FALSE**)

Altered content download workflows to save space in client cache

- ✦ Set clients to not unpack SCCM Applications or Software Updates since these are only downloaded by the full Adaptiva client and not OneSiteDownloader

Added a 360 second timeout to SQL connections

- ✦ Some customers, especially with SQL Always-On configurations, were experiencing connection requests that were non-responsive, this setting will now timeout and reattempt connection

Reports were updated

- ONS-DWN-E2 report was updated by changing the SQL query to link clients to offices using a BETWEEN statement on IP address range rather than using an INNER JOIN on startIP to subnetID. This will improve performance of the query.
- ONS-DB14 had the max recursion limit removed to ensure full coverage

An issue existed in French localization

- Changed encoding to UTF-8 in the unpacked content emitter XML

ADK for Windows 10 1803 is now supported

- Wording on P2P PXE policy has been updated to remove the wording around ADK limitations

## *Fixes*

**ACP Flags** – Microsoft released a hotfix for ConfigMgr 1802 (KB4339794) which changed the ACP flags sent to the newer client. This was causing issues with the Adaptiva client.

**Registry Backup** – Adaptiva by default used to backup the registry in the config folder. This is now controlled by a configuration setting. Default: False

**Adaptiva Group Target** – The Content Data Upload Management perspective did not allow the assignment of Adaptiva Groups as targets.

**SCCM Content Publication Approval Workflow** – There was an issue where the workflow was being set to blank upon performing an upgrade to Adaptiva.

**Published Application Name** – There was an issue where the name of a published application was using the "Administrator Comments" if present, rather than the name of the Deployment Type in SCCM. This was only affecting SCCM Applications.

**Client-Server** - During client install, there was a rare occurrence where installation would hang because replies got queued out of order. The server service would have to be reset to fix this situation.

**Ignore Content Deletion Messages** - Client messages for content deletion were causing heavy SQL transactions. Set server side to ignore the content deletion messages to optimize server operations

**NULL Folder** - While checking for name collisions on folders, a NULL folder was creating issues in sporadic circumstances. Code was changed to better handle this error if it occurs

## Build 5.5.674

Pre-Release Date: March 23, 2018

Release Date: April 1, 2018

### *Download*

[Build 5.5.674](#)

*Note: Please contact [ticket@adaptiva.com](mailto:ticket@adaptiva.com) or open a ticket from the support portal to receive the password to unpack the ZIP file.*

### *Enhancements*

OneSite name is now consistent throughout product

- ✦ There were some locations where OneSite was separated as One Site.

### *Fixes*

Audit log generation was failing when ConfigMgr Package or Application name contained a single quote.

- ✦ Single quote character will no longer prevent proper logging

RVP discovery from server was returning more than required number of office RVPs, leading to no response to OneSiteDownloader.

Description for local user creation account type configuration value.

- When setting the configuration for the local user account created by default for share access, the description in the System Configuration Perspective was incorrect. This has been updated to reflect the correct values.

OneSiteDownloader: Added automatic re-discovery support for content sources, in cases when all last discovered sources fail to transfer content.

- OneSiteDownloader would get a list of available content providers, if it traversed that list and did not get the content then it would error out without performing another discovery.

OneSiteDownloader: Non-SMB mode was transferring complete driver package, instead of the requested drivers for **Auto Apply Drivers** TS step.

- OneSiteDownloader will now only download the necessary drivers from a driver package as expected from native ConfigMgr behavior.



Removed Adaptiva network provider from Windows network provider order. We will rely on WMI and windows APIs to capture logged user information.

- Previously, OneSite relied on the network provider to be able to capture the currently logged on user information. This is now gathered through WMI and Windows APIs allowing us to remove the network provider. There were situations where customers reported issues with Remote Desktop Connections with the Adaptiva Network Provider in place.

Correct IP address was not used in ContentRequest when specific IP interface address was used for binding.

- This was an issue only with systems that had multiple NICs installed. In this case, there is a registry setting that we set to identify the correct NIC to use and this was missed in the code for ContentRequest calls.

Client Health: Added configuration to specify ConfigMgr collection IDs to be used in Software Ping and Package Ping health checks. Earlier they were always targeted to 'All Systems'

- ✦ Customers expressed concern that 'All Systems' was too big an impact for these health checks. Added code to read two new registry entries so that you can specify what collections should be used as target. If no collections are specified in registry, no data will be available when these checks are run and always fail. To enable these health checks, create the following values in the **HKLM\Software\Adaptiva\Server** registry key:
  - String Value: **chs.softdist\_ping\_sms\_target\_collection\_id**
  - String Value: **chs.pkg\_ping\_sms\_target\_collection\_id**
- ✦ Enter the collection ID that you wish to run the health checks against as the data for these values
- ✦ After setting the values, you must restart the Adaptiva Server service

## Build 5.5.673

Pre-Release Date: January 16, 2018

Release Date: February 2, 2018

### Download

[Build 5.5.673](#)

*Note: Please contact [ticket@adaptiva.com](mailto:ticket@adaptiva.com) or open a ticket from the support portal to receive the password to unpack the ZIP file.*

### Enhancements and Fixes

Added SQL Index on Adaptiva notifications table

- This is a performance enhancement to better manage queries to this table

In case a schedule never fired before and start time is in past, load-level duration is not being applied to the calculated time.

Cloud DP path length in alternate content provider call exceeded the OneSite column length

- If you are using cloud DP's with CM, you need to configure them in the system configuration perspective as IBCM servers. Adaptiva OneSite will automatically fall back to CM to allow BITS connection to the cloud DP. Unfortunately, the remote path provided in the invocation exceeded the length of the OneSite client in-memory database causing an invocation failure. This should still result in a fallback to CM but not with the return code we would normally provide. A bug in CM was uncovered where when an ACP falls back, CM cancels the job after connecting with the Cloud DP. A bug was filed with Microsoft.

Added local alternate content provider policy for software updates while ConfigMgr client is still in provisioning mode

- CM does not pull down the alternate content provider policies while in provisioning mode preventing an ACP from being invoked during an OSD task sequence when applications and software updates are added.

Delete local policy for Application and Updates only after CM policy is received

- Once CM policy has arrived in the client is no longer in provision mode, the Adaptiva local policies are removed.

Local transaction log was not creating missing folder path on commit

## Build 5.5.672

Release Date: December 15, 2017

### *New Features*

Client Health for Windows 10. *Client health basic has been retired.*

- As part of the Windows 10 Accelerator Program offering. 18 additional Windows 10 Health Checks have been added along with 20 existing health checks being identified as part of the Windows 10 Accelerator Program. These health checks are accessible by adding the Windows 10 Health Check license (previously Client Health Basic).

### *Enhancements and Fixes*

PXE unknown computer setting change required server restart

- If the Unknown Computer support setting within the Peer-to-Peer setup perspective is selected after P2P PXE has been setup, restarting the Adaptiva server service was required to activate the new configuration. The change now is active without a service restart

Assertion when push policy folder is accidentally selected for running policy

Updated getTSFolderMemberTrigger for avoiding problems in WSUS cleanup

- A fix was added where during the WSUS cleanup activity, a String or Binary truncation error is encountered on an Adaptiva database object.

```

Wakeup for a polling cycle
Deleting old expired updates...
*** DECLARE @DRS_Context VARBINARY(128);SET @DRS_Context = CAST(N'SCCM_DRS
*** [22001][8152][Microsoft][SQL Server Native Client 11.0][SQL Server]String or binary data w
Error: SQL error. Source: SqlExec
STATMSG: ID=6700 SEV=E LEV=M SOURCE="SMS Server" COMP="SMS_WSUS_SYNC_
Skipping WSUS Cleanup because of the SCF setting.
Wakeup for a polling cycle
Deleting old expired updates...
Deleted 231 expired updates
Deleted 1503 expired updates
Deleted 1503 expired updates total
Deleted 4 orphaned content folders in package PS1001DF (UPDP-2015)
Deleted 2 orphaned content folders in package PS1001E3 (UPDP-2014)
Deleted 262 orphaned content folders in package PS1002DD (UPDP-2017-Q2)
Skipping WSUS Cleanup because of the SCF setting.
Wakeup by SCF change
Skipping WSUS Cleanup because of the SCF setting.
Wakeup by SCF change
Wakeup by SCF change

```

### Sending thread pool locking is improved

- The send lock process was improved to increase the efficiency of the sending thread resulting in a greater throughput and reduced buffer sizes.

### Changed built-in SCCM install workflow to wait for up to 60 minutes for CCM install to finish

- The built-in Post Download Workflow - SCCM Client Installation workflow has been enhanced to have a 60 minute timeout by default added to the workflow in the event the SCCM client installation does not end or the failure isn't recognized, the new timeout prevents a non-terminating workflow.

### No deployment status for core policies. Eg. 401

- The core policies send to status messages on each modification to the policy. In a large environment, the updates can slow down processing and the status messages are not being used currently. By eliminating the update, the SQL and Adaptiva server performance increase

### Do not allow merge option for Central office.

- The merging the central office into another office is prevented. Merging the central office into another office causes the central office to be deleted after the merge causing distribution issues from the server's client.

### Import resolve button required double click.

- Only a single click is now required to provide the resolution to import warnings and errors.

### Auto deploy workflow on import. If the workflow start node has auto deploy on import set to true, those workflows are automatically deployed when imported.

- The new setting allows workflow to be automatically saved and deployed upon being imported decreasing the complexity of import OBEX files.

Optimized unknown computer cleanup task.

Another enhancement to simplify sharing of OBEX files.

- Support for specifying import folder during exporting objects. This folder is automatically used when these objects are imported.

TFTP source randomization when PXE machines are booted at once.

- Randomization of TFTP sources increases the capacity of the number of machines that can be simultaneously booted.

All admins role will have read permission on workbench page explorer view.

- When creating roles which limit access to the user, the home view can be closed and then access to reopen it is not available. This improvement allows each role to have access to the workbench page explore view under Manage Views.

Web wakeup page script.

CCM client version information re-loading

Minor leak in OneSiteDownloader messaging fixed

OneSiteDownloader log line crash fixed

Updated CHS and OneSite dashboards.

- Client Health and OneSite dashboards available in SQL Server Reporting Servers were enhanced to provide additional insight into the content delivery and health of the environment.

When no cache drive is available, content file being created in c:\windows\syswow6432

- While extremely rare, it is possible for content files be created outside the Adaptiva cache and reporting to the OS the hard drive space taken. This is fixed in this build.

## Build 5.5.671

Release Date: December 1, 2017

### *New Features*

- OneSiteDownloader is included in client (we now place the executable file into the client install folder under x86/amd64 which will help with in-place Windows 10 installations)

### *Enhancements and Fixes*

- Internet Based Client Management fix for where, if SCCM failed to cancel an IBCM job. OneSite would process it over and over again every time Adaptiva service started and if it didn't exist in SCCM anymore, we would never get told to quit trying until the timeout of 7 days.
- GetTSFolderMemberTrigger fix
- SQL error caused wrong content status caching at xxxx POC

- ❑ Removed double quotes from the Adaptiva Env values. (the install location is set as an environment variable AdaptivaClient so you can set your set SMSTSDownloadProgram variable to %AdaptivaClient%\bin%\%processor\_architecture%\onesitedownloader.exe)

## Build 5.5.670

Release Date: September 21, 2017

### *New Features*

- ❑ Added a new PowerShell script in the download source which assists in creating a customized boot image to support OneSite OSD P2P. The script is located in the , CreateOneSiteBoot\_Script.zip file. For more information, see the [read me article](#).

### *Enhancements and Fixes:*

- ❑ Dependency graph cleanup for Application Deployment Types on expiry.
- ❑ Expedited schedule registration processing during server startup.
- ❑ OneSiteClient: fixed notification thread timeout issue.
- ❑ Fixed an issue in the case of offices configured as VPN or metered in which the client could hit high CPU condition.
- ❑ Optimized usage of UDP datagram pool.
- ❑ Skipping processing of collection updates for client uninstalls when collection update setting is off.
- ❑ A control setting is available to disable content receipts from laptop clients
- ❑ Added dynamic handling of Adaptiva local user account creation setting changes.

## Build 5.5.669

Release Date: July 1, 2017

### *New Features*

- ❑ New ConfigMgr Reporting dashboards have been added for OneSite and ClientHealth.

### *Enhancements and Fixes:*

- ❑ Added backup logic to query Management Points from WMI using SMS\_Authority.
- ❑ Local or remote sources on the Adaptiva Server are chosen randomly as opposed to iteratively, allows for better load leveling.

- Resolved an issue in which if a Software Update deployment was set to allow for downloads from Microsoft Update (WUMU), the ACP call to Adaptiva would fail.
- During the Adaptiva Client installation the App-V service is restarted only when this feature is enabled thus reducing the installation time.

## Build 5.5.668

*Release Date: April 1, 2017*

### *New Features*

- Support for Non-SMB content transfers to OneSiteDownloader during OSD.
- Support for no-broadcast subnet OSD. This will also work for no Adaptiva Client subnets, but there need to be clients on other subnets of same office.
- Faster download support for Office 365 click to run.

### *Enhancements and Fixes:*

- Local and Remote office download timeout values decremented to 6 minutes. Also, if Wake on LAN is off, local office timeout will happen immediately after office level content discovery fails.
- Fixes in OSD folder member trigger.
- FQDN used during WMI connections which resolves an issue when connection attempts were made in multi-domain environments.
- Adaptiva Client installer will no longer allow downgrading to a lower version.
- Resolved an issue with AdaptivaClientSetup.exe when the -nocachedel switch was used with the -cleaninstall switch in which the cache was wiped.
- During Adaptiva Server setup, the ConfigMgr Reporting Services Point account will now be granted db\_datareader role for the Adaptiva database. This will facilitate the execution of SSRS reports.
- During AdaptivaClientSetup, where the server name is changed from FQDN to NETBIOS name and vice-versa, but the name is still the same, the client will not be auto reset.
- Resolved recursive condition by adding a check to the Import Network Topology workflow for duplicate parent and child office names.
- In the case where an Adaptiva client is not licensed for OneSite and the client receives a push volunteer request, the request is ignored.
- Added double quote for AdaptivaServiceRestart command line as it would fail in some scenarios.

## Build 5.5.667

*Release Date: December 5, 2016*

### *Enhancements and Fixes:*

- Fix: A resource leak in compression algorithm when compression does not lower the size of data.

## Build 5.5.666

*Release Date: December 1, 2016*

### *Enhancements and Fixes*

- 33 new health checks are added to Client Health product.
- Latest JRE 8, version 111 included.
- Added notes and checks for ADK 10 supported versions. Only ADK versions up to 1511/10.0.10658.0 are allowed to be used P2P PXE configuration.
- Virtual SMP: Support for enforcing preferred hosts and office discovery has been added.
- New indexes on text inventory tables to improve performance of inventory upload.
- Support for discarding inventory report messages when retry pool is percentage full.
- A method to do complete reset of client health data and health collections has been added.

## Build 5.5.665

*Release Date: November 1, 2016*

### *Enhancements and Fixes*

- Added a Pre download workflow for SCCM 2012 client installations. This workflow can be used in Adaptiva push policy for a version check of SCCM client and avoid client package download.
- Added native support for Office 365 downloads. We still recommend using the Adaptiva method of Office 365 update deployments, as it is able make use of binary differential.
- Added new vSMP configuration: p2p\_space\_allocator.min\_srcs\_discovery\_for\_allocation. This allows for picking better hosts for vSMP.
- FileOperations workflow activity: EOF handling in readLine(). Result will be false when EOF is reached.

- If trailing spaces are detected in the unpacking folder field for a content push policy, the trailing spaces will be removed.
- Resolved an issue in which no broadcast attempts will occur in a WiFi configured office. Even when broadcast may be enabled, all communication is done using WiFi protocol.
- Fixed a rare condition in data transport protocol where it can start consuming higher CPU.
- Fixed a condition causing error during of processing IBCM ipv6 prefixes.

## Build 5.5.664

*Release Date: October 1, 2016*

### *Enhancements and Fixes*

- Remote PXE: A new client configuration (p2p\_pxe.allow\_remote\_pxe) is added which allows RVPs to support remote PXE boot and is useful when IP helpers and DHCP snooping is in use.
- Speed improvements in UEFI PXE boot by rejecting requests for non-essential files.
- Fixed an issue with Office vs client ids in-memory cache.
- Updated OneSite report: DWN-E3 – All Missing Content Referenced by a Specific Task Sequence for a Specific Office.
- CacheMigrationTool and pre-caching uses AdaptivaCache as temp folder instead of client temp.

## Build 5.5.663

*Release Date: September 1, 2016*

### *Enhancements and Fixes*

- OneSiteDownloader: added integration with Universal Imaging Utility, from Big Bang LLC.
- CacheMigrationTool: added support for caching content from Altiris client.
- Added automatic detection and exclusion of read-only drives in running Adaptiva Client.
- Fixed a time calculation issue in wake on schedule module used in Green Planet product.
- Fixed an issue with Client upgrades where a particular type of upgrade failure would interfere with future upgrades.
- Updated product documentation.



## Build 5.5.662

*Release Date: August 1, 2016*

### *Enhancements and Fixes*

- Added performance optimizations for SQL queries that are used for fetching stored Adaptiva objects from the Adaptiva database.
- Added performance optimizations for Intellistage content push workflows when running on VPN clients.
- Updated OneSite Users Guide and OneSite OSD Users Guide.

## Build 5.5.661

*Release Date: July 1, 2016*

### *Enhancements and Fixes*

- Peer-to-peer discovery request processing engine uses a thread pool now. This will result in faster and parallel discoveries and clients will perform better under higher loads.
- Added a new configuration setting to block WAN download for clients which are marked restricted and prohibited: `contentsystem.no_wan_download_for_restricted_prohibited`. The default value is false.
- After the Adaptiva Server service starts any pending callbacks will be made using batched processing to decrease the startup time of the service.
- Added support for handling Buddhist calendar system for packed content files.
- Added Unknown Computer support when PXE booting Adaptiva clients which report to the Adaptiva server running on the CAS.
- Addressed a condition in which the processing of incoming requests may stop during data transport.
- Automatic detection of wrong BCD file generation. This could happen if wrong `bcdedit.exe` is used in PXE tools.
- Updated the SQL connection pool library to the latest version.
- Updated Java 8 engine.

## Build 5.5.659.0

*Release Date: June 1, 2016*

## *Enhancements and Fixes*

- We are working with Microsoft for suitable modifications to the ACP interface for the new "Office 365 Client" update feature via SCCM. In the meantime, you can use the native OneSite method for automatically updating Office 365 which is described in the product document: [Managing Office 365 Click-to-Run Updates with Adaptiva OneSite.](#)
- Additional handling for ACP download requests when client has not obtained client ID yet.
- Added automatic detection of client database errors and self-remediation.
- WiFi protocol enhancements to handle extremely large subnets.
- AdaptivaClientSetup automatically handles cached content migration between two AdaptivaServers in same or different time zones.
- Added support for VPN office clients to automatically obtain latest version of remote content sources.
- Removal of Application and Software Update global ACP settings if OneSite is removed from licensing perspective.

## **Build 5.5.658.1**

*Release Date: May 1, 2016*

## *Enhancements and Fixes*

- Automatic handling of new SCCM built-in read-only packages during content publication on AdaptivaServer. New Client Upgrade packages were recently introduced in SCCM and we were failing to identify them as read-only when trying to apply ACP settings.
- Tool foundry: Handling of single quotes and special characters in tool command line.
- CAS PXE was failing for clients when child primary uses SQL named instance.
- Stability enhancements to CacheMigrationTool.
- Fixed slow data upload detection configuration issue.
- Faster office client lookups to boost server performance.
- Added indexes to Content and Policy tables.
- Adaptiva Environment Check Workflow is included in the product now.
- Disallowed removing Adaptiva client from UI for read-only administrators.
- Fixed removing of AD groups from a security role, if no members were present in that group.
- Faster AdaptivaClient Startup.
- Adler configurable checksum support for LAN and WAN transfers.

## Build 5.5.657.1

*Release Date: 02/10/2016*

### *Enhancements and Fixes*

- Performance improvements for office / clients id processing.
- Faster processing of PXE boot requests.
- Two minute expiration in RVPLists replies. Large RVPList replies caused server to not handle new client requests in a timely manner.

## Build 5.5.656

*Release Date: 01/22/2016*

### *Enhancements and Fixes*

- Fix for HSQL high CPU and script file growth.
- Fix for Office 365 unpack issues.
- Fix for content re-publication issue.

## Build 5.5.655

*Release Date: 01/15/2016*

### *Enhancements and Fixes*

- Fix for a rare assertion condition on Adaptiva server when a client gets uninstalled during content source computation.
- Fix for assertion condition on server when querying LiveFlow data for no office clients.
- Fix for condition where laptops were not sending remote content progress receipts.
- Fix for a condition where global pause/resume was not immediately working for no office clients.
- PXE policy shows enabled after upgrade, but it not actually enabled by a system admin.
- SCCM ACP notifications are thrown in a separate thread.

## Build 5.5.652

*Release Date: 12/01/2015*

## New Features

- Content Management UI:
  - LiveFlowTM adds the ability to view, pause, reprioritize and cancel all WAN transfers in real time.
  - Content Distribution Status displays the availability of all content in Adaptiva offices.
- CacheMigrationTool. New command line option to revalidate migrated content. This can also be used with other command line options.

Ex: CacheMigrationTool.exe –revalidate

- Added support for encrypted SQL connections.
- New WiFi protocol. This allows clients in WiFi offices to perform peer-to-peer communication and content downloads.
- Added support for extending the Adaptiva workflow engine by creating new Workflow activities using PowerShell scripts.
- New Workflow Activities: Adaptiva Log and DateTime activities.
- New: Component based logging for the Adaptiva client.
- New: Find office using an IP address.
- Added a new DP fallback setting when a content download is cancelled by an Adaptiva Admin.
- New Workflow: Cleans empty offices after a defined duration.
- Laptops now send content download receipts.
- OneSiteDownloader: Support has been added to intelligently ignore slow machines during unpacked content download.
- New: Active/Passive remote download session support. All current priority downloads remains passive and randomly time-slice with each other. All lower priority downloads also remain passive. All remote transfers are shown in LiveFlowTM UI.
- Java Run Time Environment updated to JRE 8.
- Client, Server, and UI registry locations are now located under HKLM\Software\<WoW6432Node>Adaptiva. Earlier location was HKLM\Software\JavaSoft\Prefs\<WoW6432Node>Adaptiva.

## Enhancement and Fixes

- Prohibited clients are allowed to be an RVP but will only become RVPs in case there are no active normal/preferred clients on that subnet.
- Added support for parsing CIDR formatted subnet information in import topology workflow.

- Fixed SCCM Client installation workflow to specifically check for SCCM 2012.
- Importing a workflow that references an imported form will automatically correct the form ID to the imported form.
- Performance improvement for Adaptiva Protocol transport for sending large messages.
- Correct client type in p2p discovery responses.
- Fixed locale used while connecting to SiteControl file.
- Miscellaneous fixes